

M-SERIES

MAGNETIC DIMMABLE CLASS 2 LED DRIVER

P/N: M20L12DC-AR

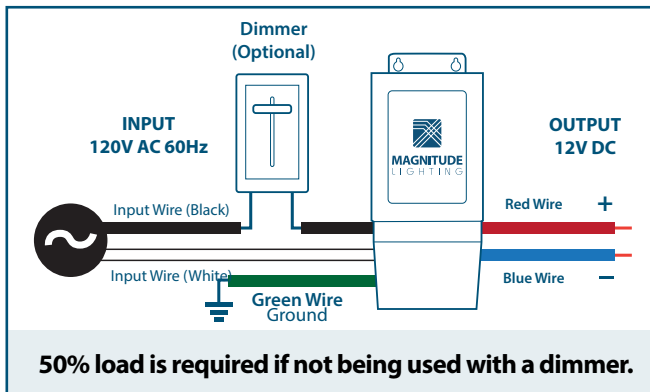


Magnitude's M20L12DC-AR is the most compact LED driver on the market with a magnetic transformer core. It is equipped with two auto-reset breakers, one on the input and one on the output, which protect both the load and driver. The driver is encased in a coated metal box that includes 2 knock-outs, one on each side, to enable easy installation that complies with electrical code requirements.

QUICK SPECS

Input Voltage	Max Output Power	Output Voltage	Output Current	Efficiency @ Max Load	Power Factor @ Max. Load	Envir. Protection Rating	Weight
120VAC	20W	12VDC	1.9 A	> 74%	> 0.81	NEMA 3R	35oz

WIRING DIAGRAM

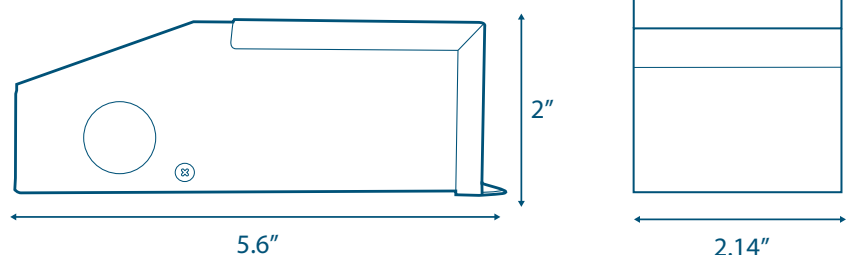


FEATURES

- Dimmable with any standard MLV/Incandescent TRIAC- (Leading edge) dimmer switch
- Dim down to 1%
- Dual protection - primary and secondary auto-reset circuit breakers
- Nema 3R - Outdoor Use
- Two knock-outs one on each side
- Class 2
- ETL Listed
- Certified to CSA Standard

ENCLOSURE DETAILS In. (mm)

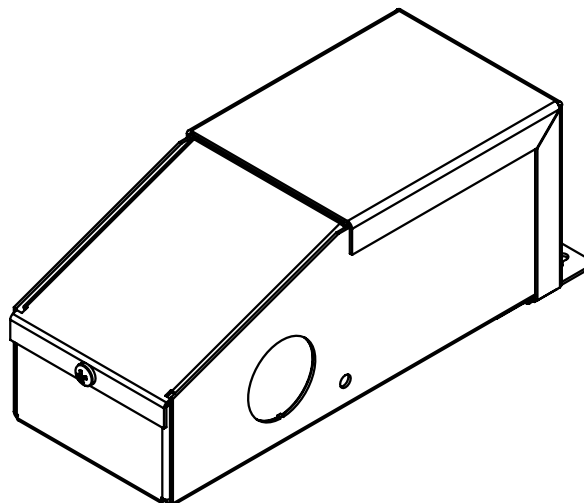
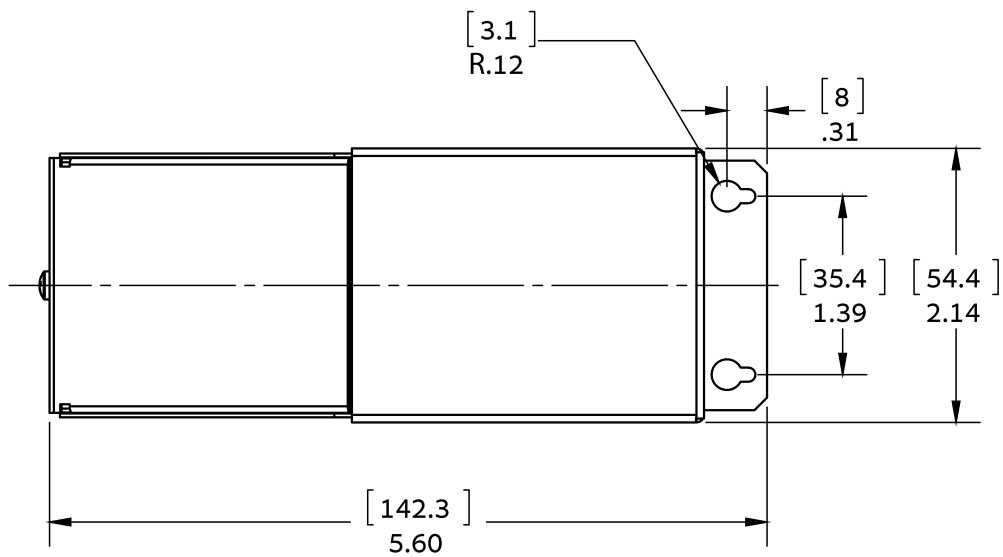
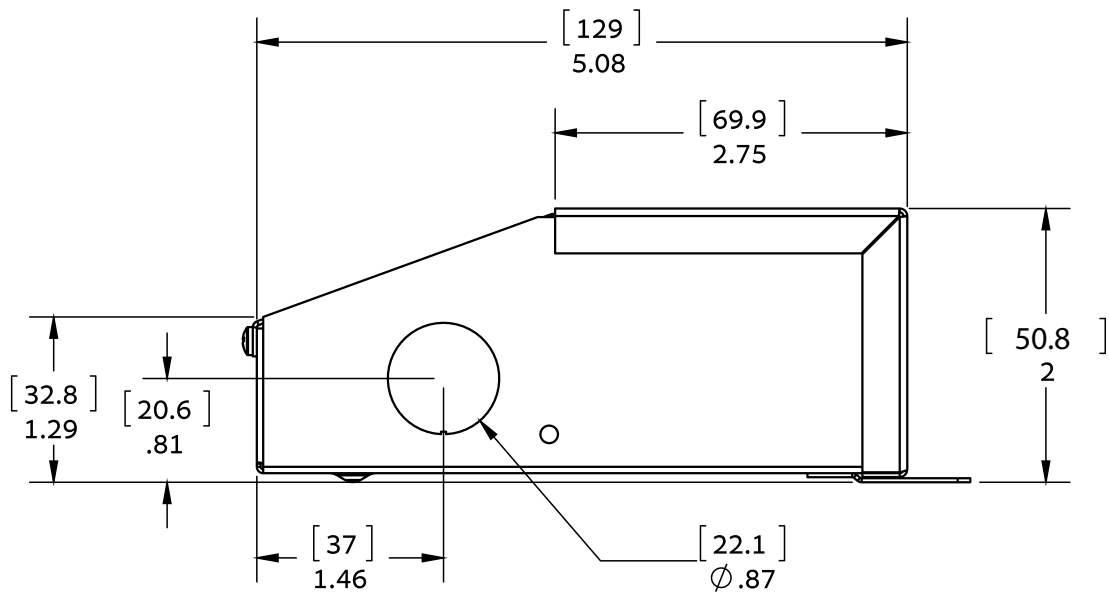
Length	5.6 (142.2)
Width	2.14 (54.3)
Height	2 (50.8)

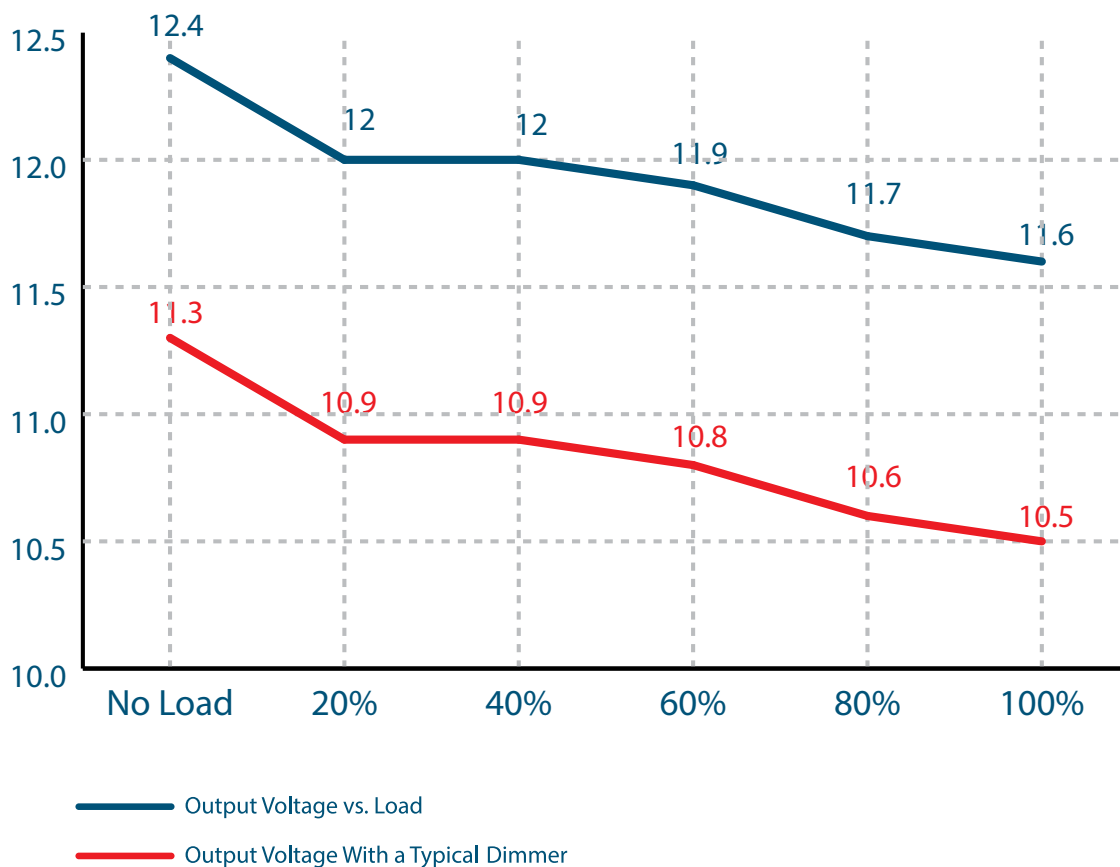


SPECIFICATIONS

Input	
Input Voltage	120VAC
Input Current @ Max Load	0.31 A
Power Factor	> 0.81
Efficiency	> 74%
Output	
Max Load	20W
Output Voltage	11.6 VDC @ Full Load
Output Current @ Max Load	1.9 A
Open Circuit Output Voltage	12.4 VDC
Coil Former	Double Section Bobbin
Environmental	
Operating Temperature	-30°C - 45°C (-22°F - 113°F)
Min Installation space between drivers	5" Inch
Thermal Class	B130°C
Dimming	
Minimum Dimming Level	1%
Protections	
Circuit Breaker	Primary and secondary auto-reset
Mechanical & Housing	
Leads Primary	PVC 600V #20
Leads Secondary	PVC 300V #16
Length	5.6" (142.2mm)
Width	2.14" (54.3mm)
Height	2" (50.8mm)
Weight	35oz (990grams)
Housing Material	Coated metal
Housing Color	Black
Junction Box	Yes
Mounting	Two Hole flange mounting
Approval Markings	
Certificates / Approval Signs	UL 8750, class 2

MECHANICAL DIAGRAM





M-SERIES

MAGNETIC DIMMABLE CLASS 2 LED DRIVER

P/N: M40L12DC-AR

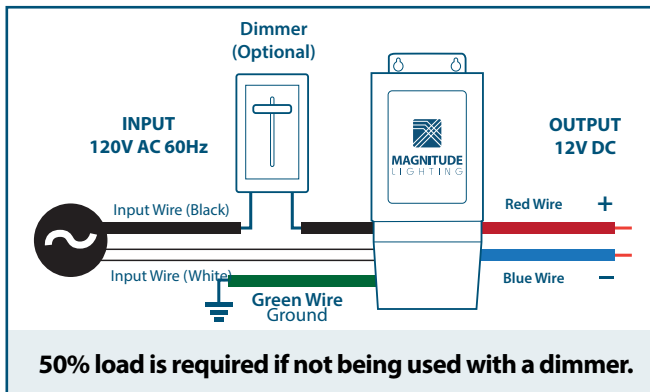


Magnitude's M40L12DC-AR is the most compact LED driver on the market with a magnetic transformer core. It is equipped with two auto-reset breakers, one on the input and one on the output, which protect both the load and driver. The driver is encased in a coated metal box that includes 2 knock-outs, one on each side, to enable easy installation that complies with electrical code requirements.

QUICK SPECS

Input Voltage	Max Output Power	Output Voltage	Output Current	Efficiency @ Max Load	Power Factor @ Max. Load	Envir. Protection Rating	Weight
120VAC	40W	12VDC	3.96 A	> 79%	> 0.88	NEMA 3R	35oz

WIRING DIAGRAM

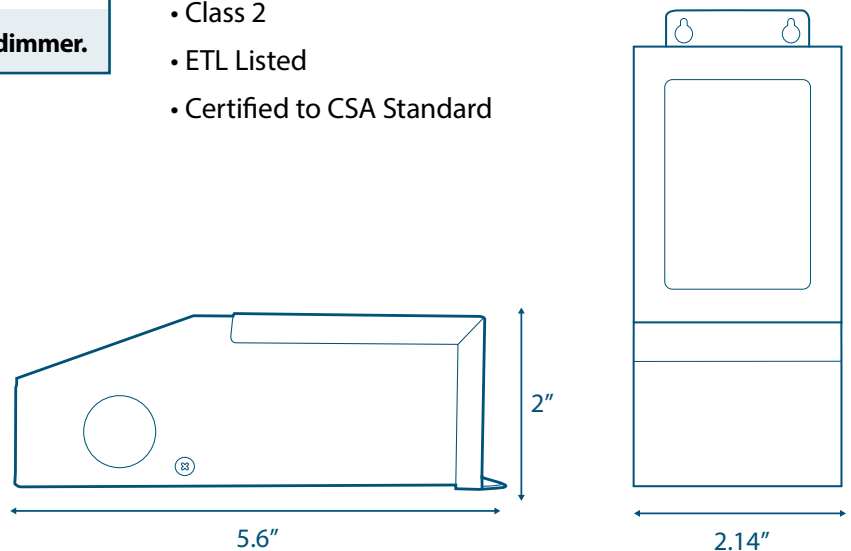


FEATURES

- Dimmable with any standard MLV/Incandescent TRIAC- (Leading edge) dimmer switch
- Dim down to 1%
- Dual protection - primary and secondary auto-reset circuit breakers
- Nema 3R - Outdoor Use
- Two knock-outs one on each side
- Class 2
- ETL Listed
- Certified to CSA Standard

ENCLOSURE DETAILS In. (mm)

Length	5.6 (142.2)
Width	2.14 (54.3)
Height	2 (50.8)



SPECIFICATIONS

Input

Input Voltage	120VAC
Input Current @ Max Load	0.51 A
Power Factor	> 0.88
Efficiency	> 79%

Output

Max Load	40W
Output Voltage	11.7 VDC @ Full Load
Output Current @ Max Load	3.96 A
Open Circuit Output Voltage	12.8 VDC
Coil Former	Double Section Bobbin

Environmental

Operating Temperature	-30°C - 45°C (-22°F - 113°F)
Min Installation space between drivers	5" Inch
Thermal Class	B130°C

Dimming

Minimum Dimming Level	1%
-----------------------	----

Protections

Circuit Breaker	Primary and secondary auto-reset
-----------------	----------------------------------

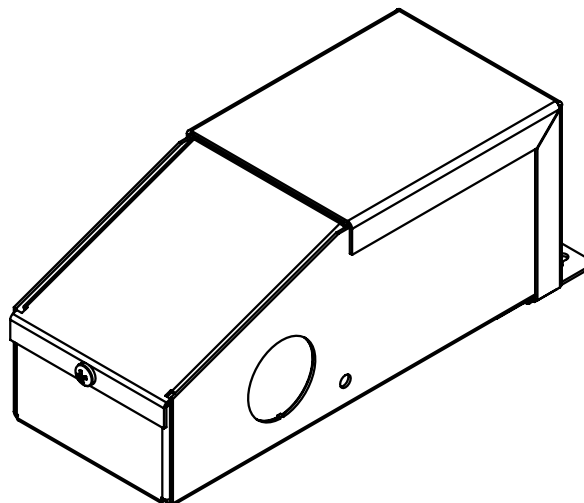
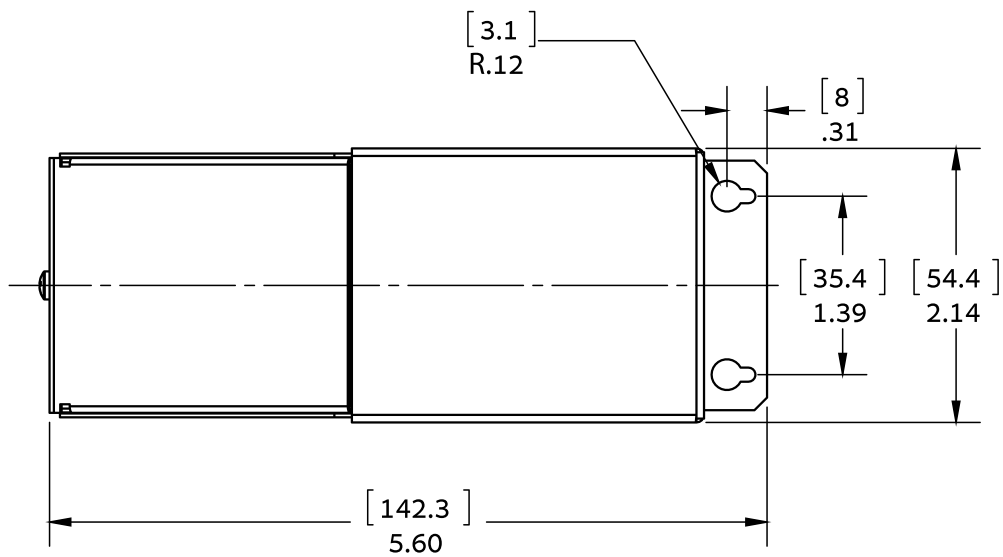
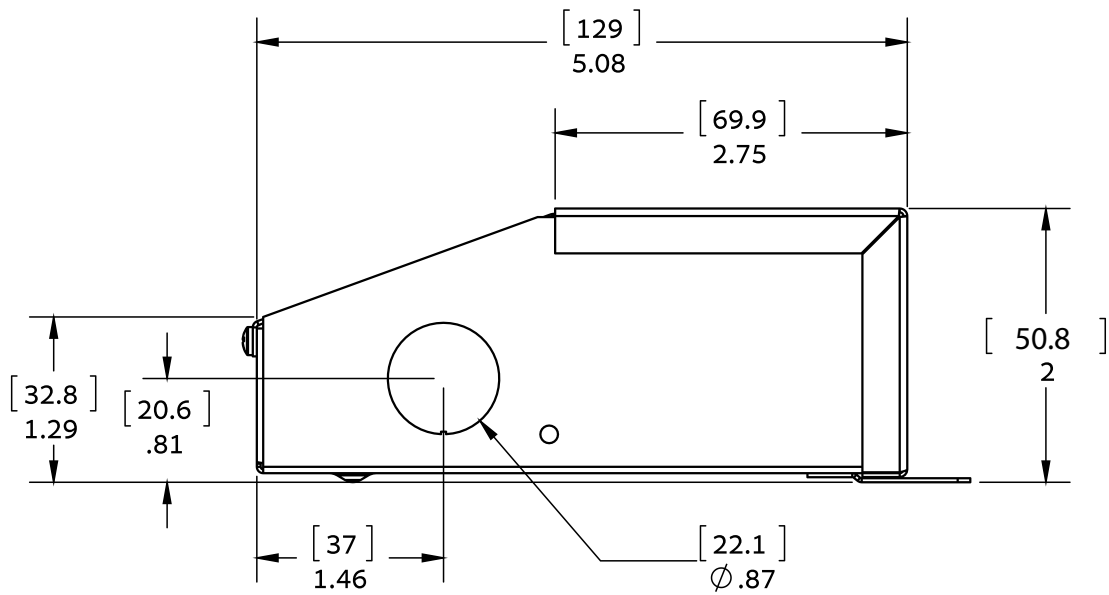
Mechanical & Housing

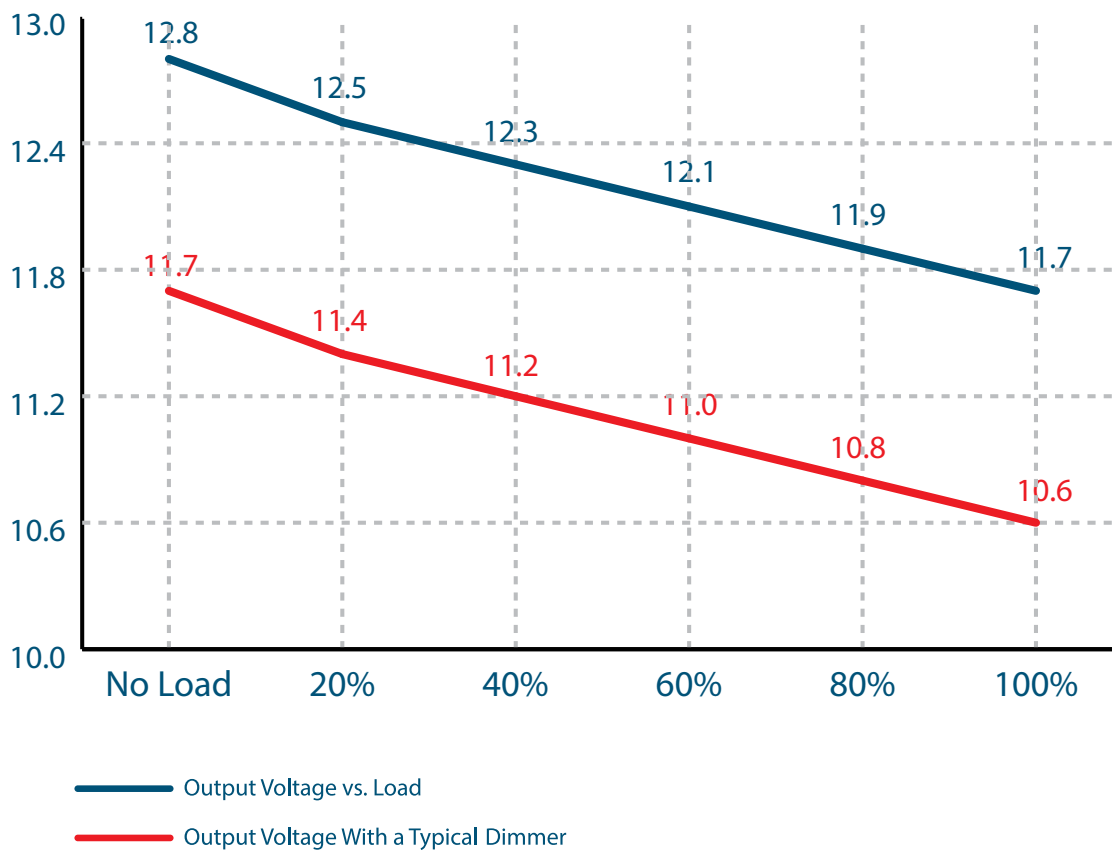
Leads Primary	PVC 600V #20
Leads Secondary	PVC 300V #16
Length	5.6" (142.2mm)
Width	2.14" (54.3mm)
Height	2" (50.8mm)
Weight	35oz (990grams)
Housing Material	Coated metal
Housing Color	Black
Junction Box	Yes
Mounting	Two Hole flange mounting

Approval Markings

Certificates / Approval Signs	UL 8750, class 2
-------------------------------	------------------

MECHANICAL DIAGRAM





M-SERIES

MAGNETIC DIMMABLE CLASS 2 LED DRIVER

P/N: M60L12DC-AR

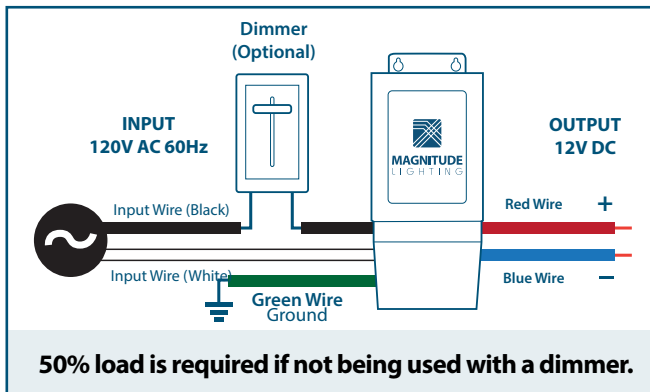


Magnitude's M60L12DC-AR is the most compact LED driver on the market with a magnetic transformer core. It is equipped with two auto-reset breakers, one on the input and one on the output, which protect both the load and driver. The driver is encased in a coated metal box that includes 2 knock-outs, one on each side, to enable easy installation that complies with electrical code requirements.

QUICK SPECS

Input Voltage	Max Output Power	Output Voltage	Output Current	Efficiency @ Max Load	Power Factor @ Max. Load	Envir. Protection Rating	Weight
120VAC	60W	12VDC	5 A	> 80%	> 0.84	NEMA 3R	50oz

WIRING DIAGRAM

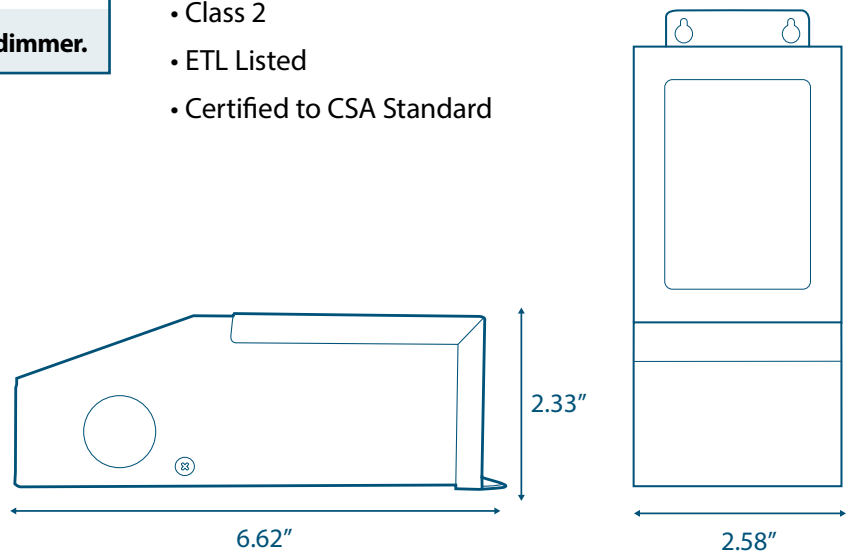


FEATURES

- Dimmable with any standard MLV/Incandescent TRIAC- (Leading edge) dimmer switch
- Dim down to 1%
- Dual protection - primary and secondary auto-reset circuit breakers
- Nema 3R - Outdoor Use
- Two knock-outs one on each side
- Class 2
- ETL Listed
- Certified to CSA Standard

ENCLOSURE DETAILS In. (mm)

Length	6.62 (168)
Width	2.58 (65.6)
Height	2.33 (59.1)



SPECIFICATIONS

Input

Input Voltage	120VAC
Input Current @ Max Load	0.76 A
Power Factor	> 0.84
Efficiency	> 80%

Output

Max Load	60W
Output Voltage	12.5 VDC @ Full Load
Output Current @ Max Load	5 A
Open Circuit Output Voltage	12.5 VDC
Coil Former	Double Section Bobbin

Environmental

Operating Temperature	-30°C - 45°C (-22°F - 113°F)
Min Installation space between drivers	5" Inch
Thermal Class	B130°C

Dimming

Minimum Dimming Level	1%
-----------------------	----

Protections

Circuit Breaker	Primary and secondary auto-reset
-----------------	----------------------------------

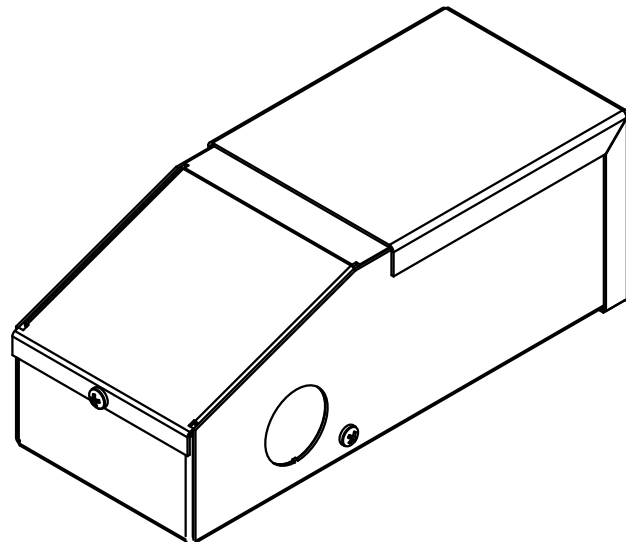
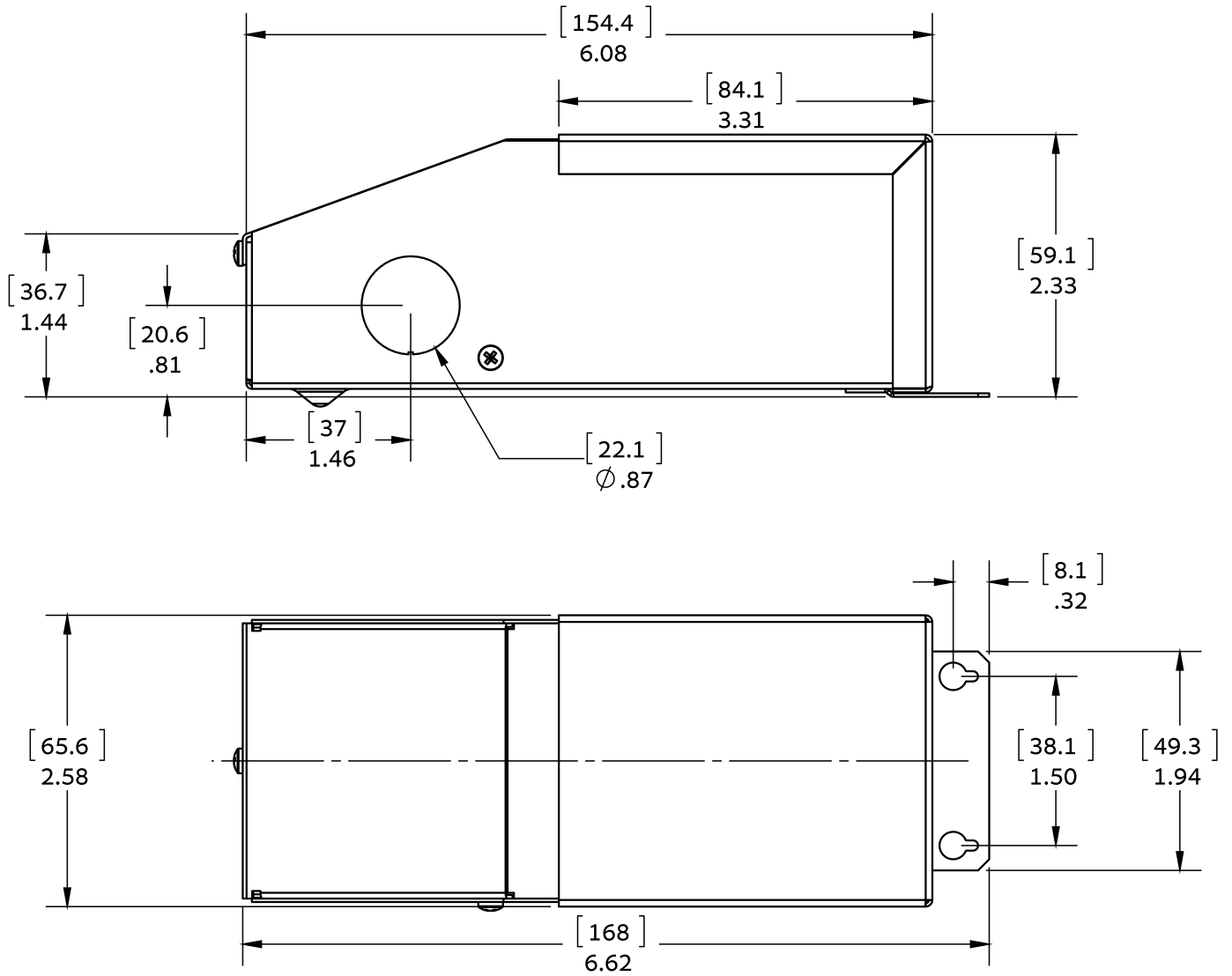
Mechanical & Housing

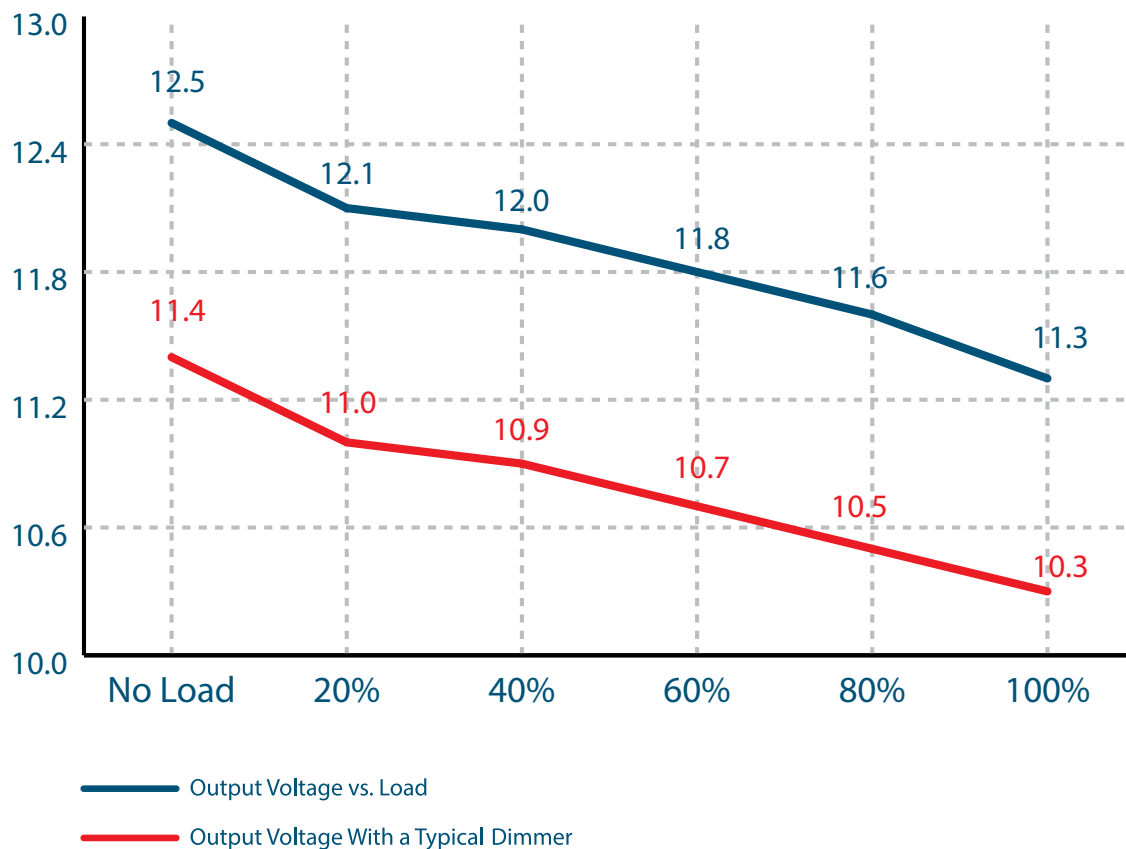
Leads Primary	PVC 600V #20
Leads Secondary	PVC 300V #16
Length	6.62" (168mm)
Width	2.58" (65.6mm)
Height	2.33" (59.1mm)
Weight	50oz (1.4kg)
Housing Material	Coated metal
Housing Color	Black
Junction Box	Yes
Mounting	Two Hole flange mounting

Approval Markings

Certificates / Approval Signs	UL 8750, class 2
-------------------------------	------------------

MECHANICAL DIAGRAM





M-SERIES

MAGNETIC DIMMABLE LED DRIVER

P/N: M100L12DC-AR

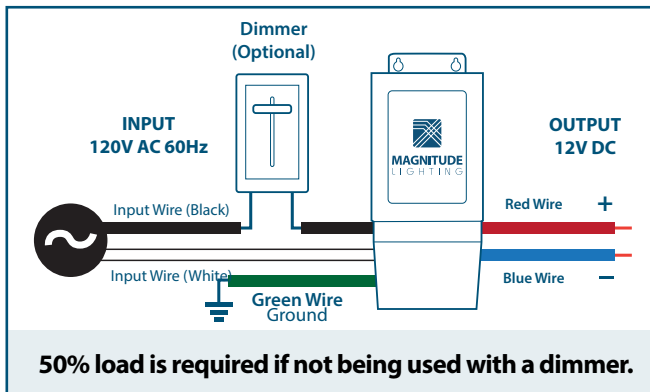


Magnitude's M100L12DC-AR is the most compact LED driver on the market with a magnetic transformer core. It is equipped with two auto-reset breakers, one on the input and one on the output, which protect both the load and driver. The driver is encased in a coated metal box that includes 2 knock-outs, to enable easy installation that complies with electrical code requirements.

QUICK SPECS

Input Voltage	Max Output Power	Output Voltage	Output Current	Efficiency @ Max Load	Power Factor @ Max. Load	Envir. Protection Rating	Weight
120VAC	100W	12VDC	10.76 A	> 81%	> 0.93	NEMA 3R	87oz

WIRING DIAGRAM

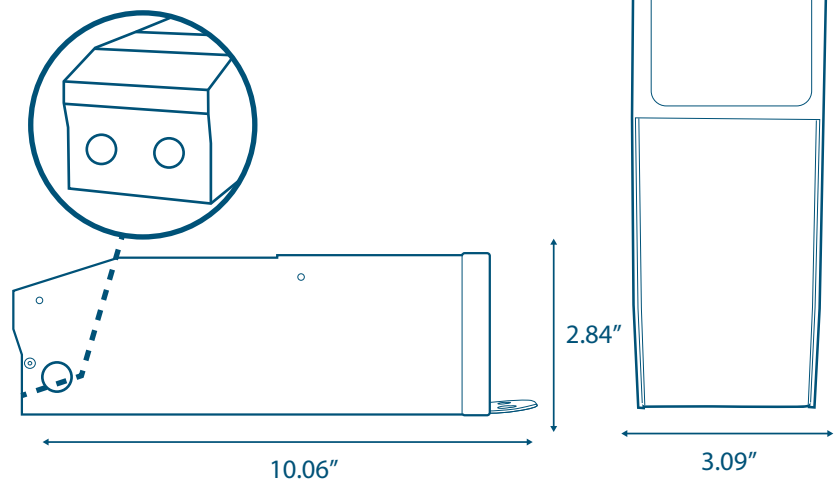


FEATURES

- Dimmable with any standard MLV/Incandescent TRIAC- (Leading edge) dimmer switch
- Dim down to 1%
- Dual protection - primary and secondary auto-reset circuit breakers
- Nema 3R - Outdoor Use
- Four knock-outs
- ETL Listed
- Certified to CSA Standard

ENCLOSURE DETAILS In. (mm)

Length	10.06 (255.5)
Width	3.09 (78.5)
Height	2.84 (72.1)



M-SERIES

MAGNETIC DIMMABLE LED DRIVER

SPECIFICATIONS

Input

Input Voltage 120VAC

Input Current @ Max Load 1.33 A

Power Factor > 0.93

Efficiency > 81%

Output

Max Load 100W

Output Voltage 12.8 VDC @ Full Load

Output Current @ Max Load 10.76 A

Open Circuit Output Voltage 12.8 VDC

Coil Former Double Section Bobbin

Environmental

Operating Temperature -30°C - 45°C (-22°F - 113°F)

Min Installation space between drivers 5" Inch

Thermal Class B130°C

Dimming

Minimum Dimming Level 1%

Protections

Circuit Breaker Primary and secondary auto-reset

Mechanical & Housing

Leads Primary PVC 600V #18

Leads Secondary PVC 300V #12

Length 10.06" (255.5mm)

Width 3.09" (78.5mm)

Height 2.84" (72.1mm)

Weight 87oz

Housing Material Coated metal

Housing Color Black

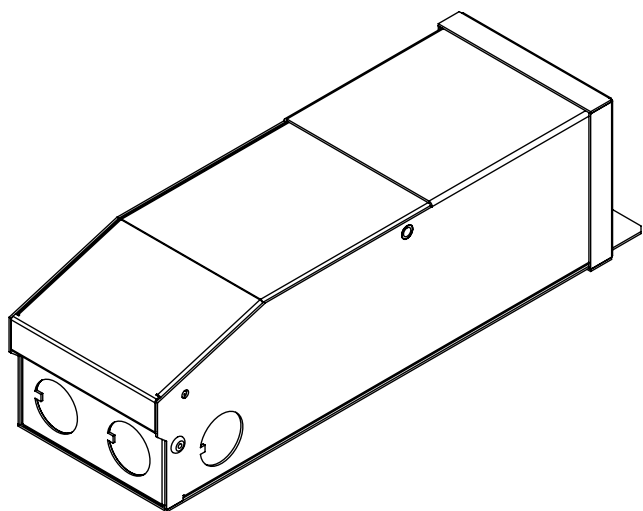
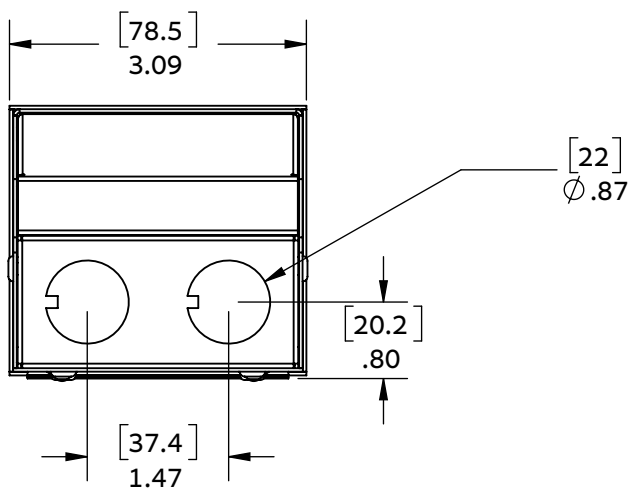
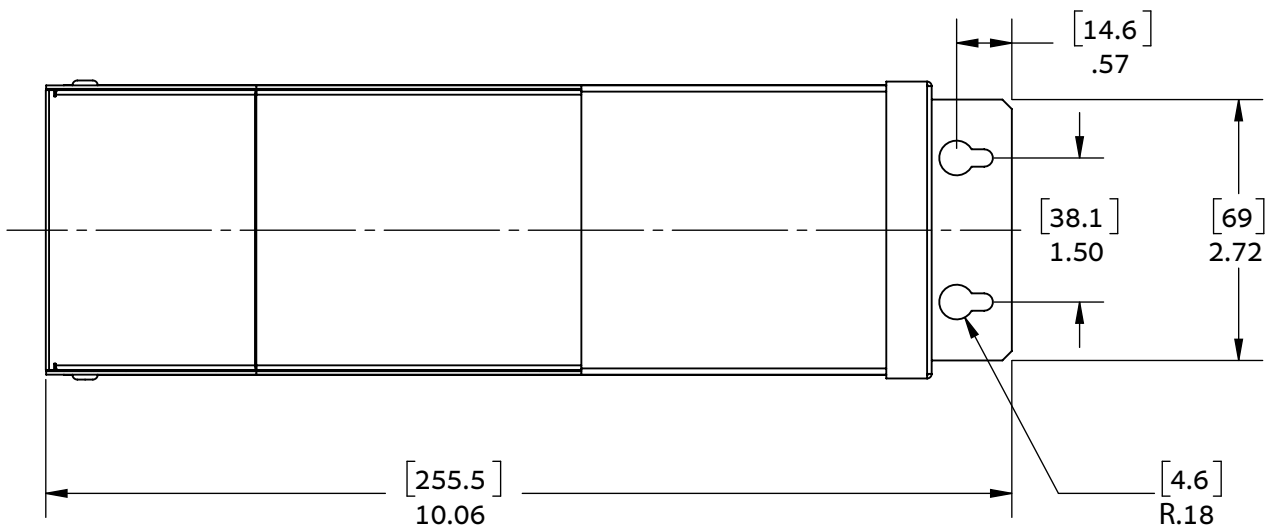
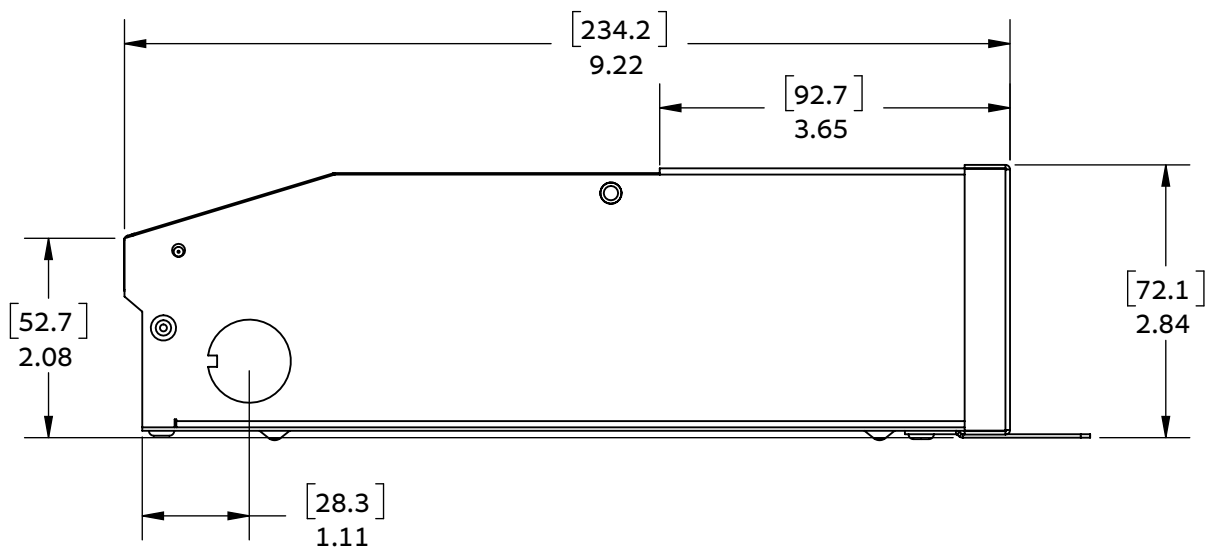
Junction Box Yes

Mounting Two Hole flange mounting

Approval Markings

Certificates / Approval Signs UL 8750

M-SERIES MAGNETIC DIMMABLE LED DRIVER



M-SERIES MAGNETIC DIMMABLE LED DRIVER

