

PRODUCT SPECIFICATION

PRODUCT	12VDC Highbay Sensor, Dimmable Function	MODEL NO	HD015VCRH
DATE	2023-03-30	PREPARED	夏勇
CHECKED	郑登新	APPROVED	周豪

CUSTOMER RECEIVED

CUSTOMER		CHECKED	
APPROVED		DATE	



## 12VDC Highbay Sensor, Dimmable Function

HD015VCRH



- 12VDC Input, 0-10V Dimmable
- Max Installation Height 12M
- Small Size, One For All. • Remote Control



On/Off Control



Detection Area



Daylight Sensor



Warranty



Stand-by period



Stand-by dimming level



Hold Time



12M Highbay



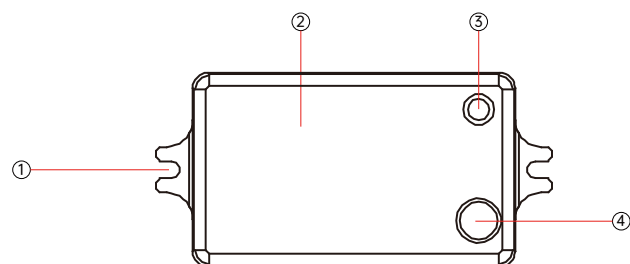
Remote Control

## Technical Data

Operating Voltage <b>12V DC</b>	Detection Area <b>25%/50%/75%/100%</b>	Mounting Height <b>Max.12m/39.37 Ceiling Mounted</b>
Operating Current <b>≤25mA</b>	Hold Time <b>5s/30s/1min/3min/5min/10min/20min/30min</b>	Detection Range <b>Max.ø14m/45.92ft Ceiling Mounted</b>
Output <b>DIM/0-10V</b>	Daylight Threshold <b>2Lux/10Lux/30Lux/50Lux/80Lux/120Lux/Disable</b>	Motion Detection <b>0.5~1.5m/s</b>
Microwave Frequency <b>5.8GHz±75MHz</b>	Stand-by Period <b>0s/10s/30s/1min/5min/10min/30min/+∞</b>	IP Rating <b>IP20</b>
Microwave Power <b>&lt;0.3mW</b>	Stand-by dimming level <b>10%/20%/30%/50%</b>	Warranty <b>5 Years</b>
Stand-by power <b>≤0.5W</b>	Operating Temperature <b>-20°C~+60°C</b>	

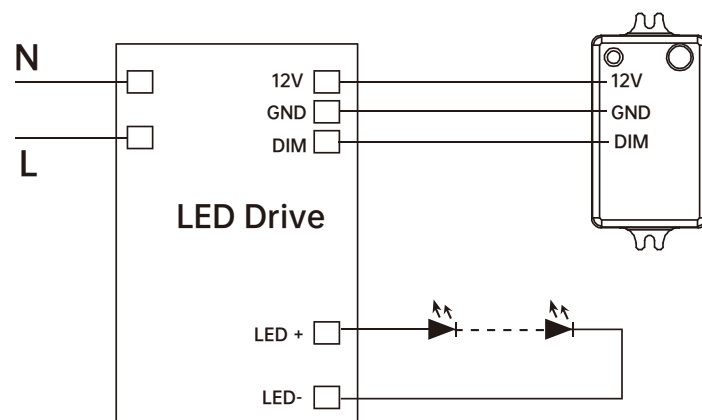
Factory Default Setting: Detection area 100%/ Hold time 5s/ Daylight threshold Disable/Stand-by period 0s/ Stand-by dimming level 10%. Can be customized default programming.

## Mechanical structure

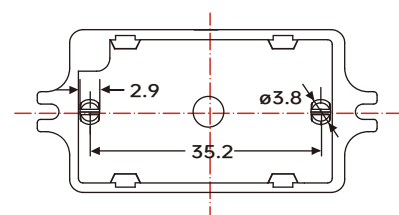
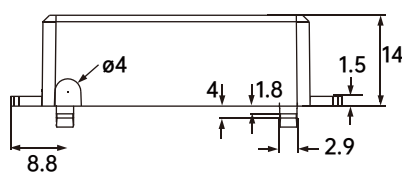
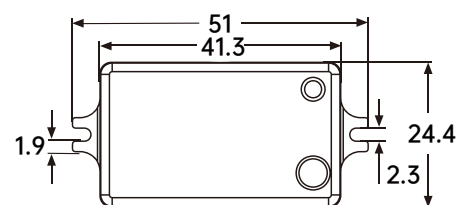


- ① Installation Hole
- ② Microwave Module
- ③ Daylight Sensor
- ④ IR Receiver

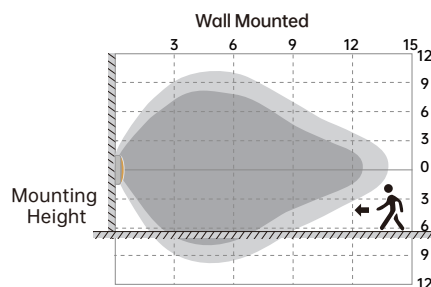
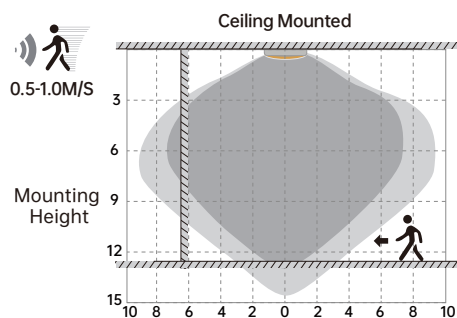
## Wiring Diagram



## Dimensions Unit: mm



## Detection Patterns

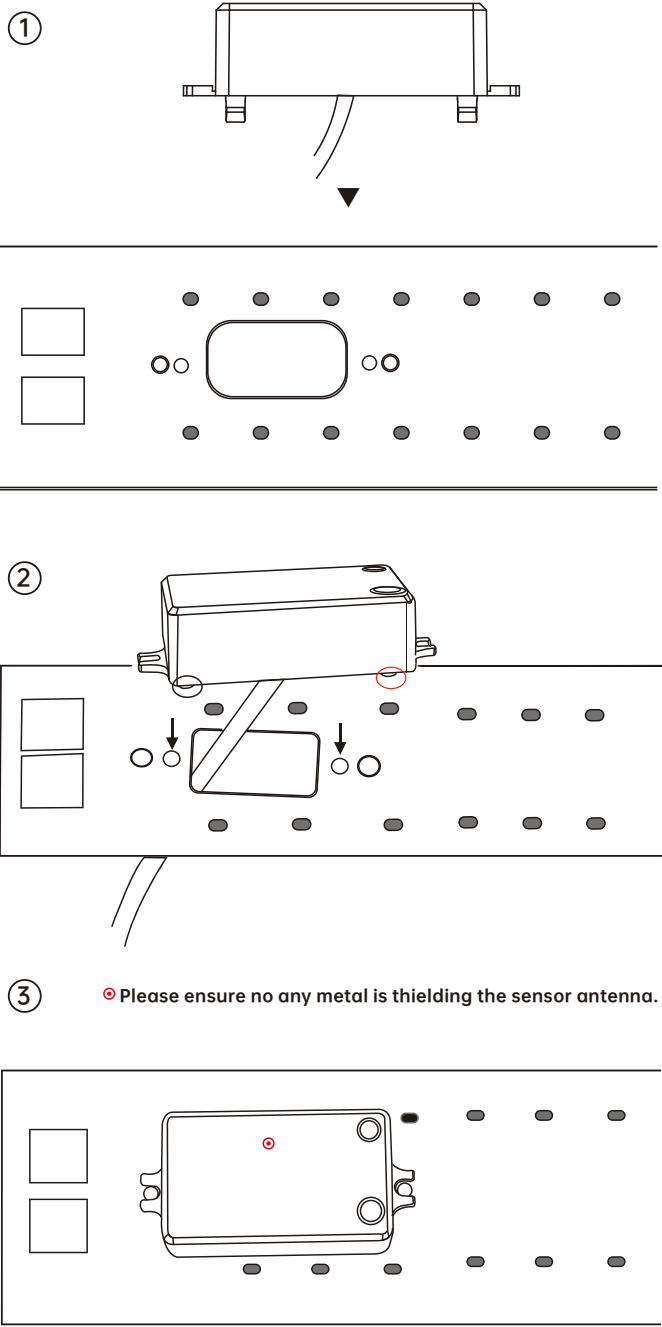


Well Detected Area Possibly Detected Area

Highest mounting height is 12m

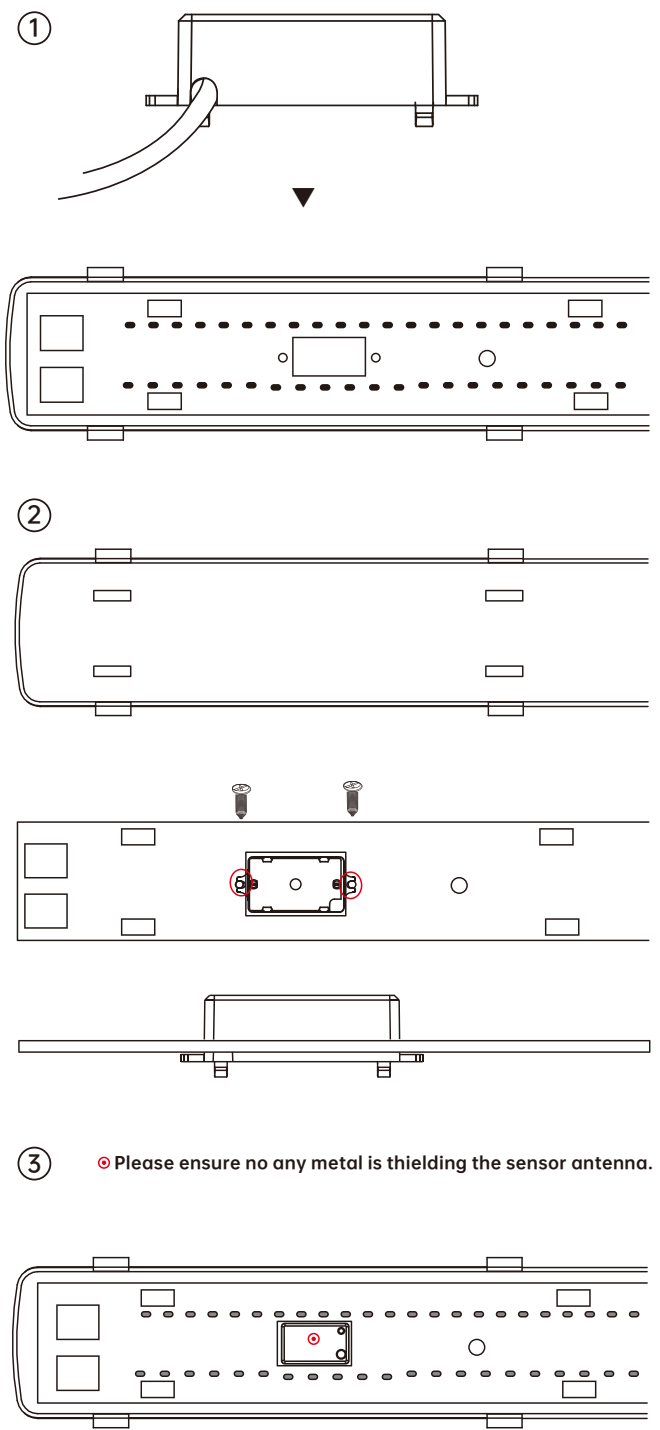
This figure indicates the maximum distance at the highest mounting height with 100% sensitivity.

Cable on center



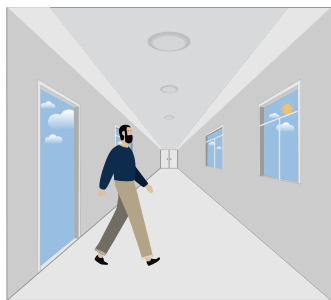
Applications

Cable on top side

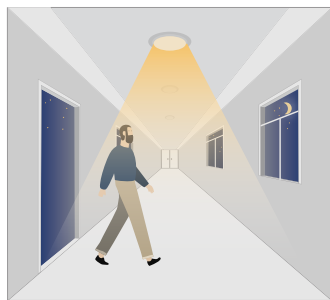


Applications

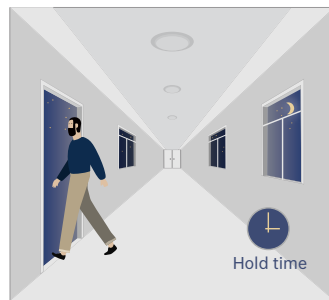
### 1. Automatically ON/OFF function



With sufficient daylight, even when motion detected, light remains OFF.



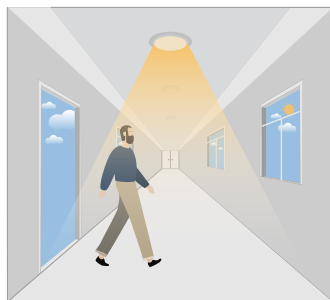
With insufficient daylight, the sensor turns light ON when motion gets detected.



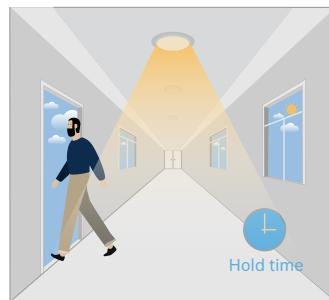
The sensor turns OFF light automatically after the holdtime when there's no motion detected.

### 2. Daylight Disable

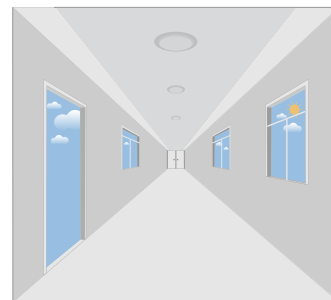
When daylight threshold is preset as "disable", the sensor turns light ON when motion gets detected, and OFF after hold-time.



The sensor turns light ON when motion gets detected.

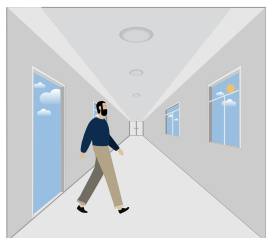


The sensor keeps light ON for holdtime period after motion leaves.

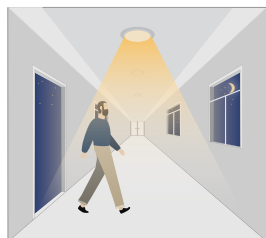


The sensor turns OFF light automatically after the holdtime.

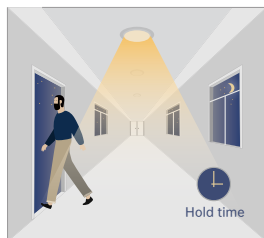
### 3. Corridor Function, Bi-level Dimmable



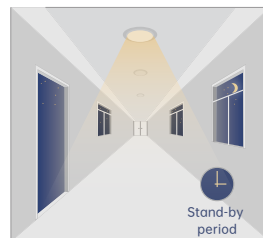
With sufficient daylight, the sensor keeps light OFF even when motion gets detected.



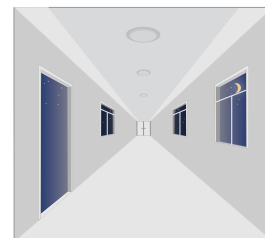
With insufficient daylight, the sensor turns light ON when motion gets detected.



After there's no motion detected, the sensor keeps light ON 100% for holdtime.



After holdtime, sensor dims light to standby dimming level for standby period.



The sensor turns OFF light automatically after the standby period when there's no motion detected.



## Attention

1. Please read the instructions carefully before using this product and keep it well for all users to read at any time.
2. The sensor should be installed by qualified electrician and ensure power is off before the installation.
3. We reserve the right to modify any incorrect text, image and necessary technical parameters.
4. Any unauthorized modification is forbidden, otherwise all guarantees will be immediately invalid.

### Installation precautions

---

1. Microwave sensor can be installed in any lamp except the one with full metal shell.
2. The detected surface cannot be shielded by metal objects.
3. Make sure the microwave module is completely exposed outside.
4. The detection surface of the sensor module shall be installed facing the detection area.
5. Should be kept away from the driver to avoid interference generation and lamp flashing.
6. Wiring must be strictly in accordance with the wiring diagram to avoid short circuit.

### Application Environment

---

1. Suitable for indoor installation to avoid false triggering due to external factors such as rain, wind or tree swing.
2. Shall not be installed in the place with all four metal shelters and small space (such as galvanized-iron roof ).
3. Shall note be mounted installation, so as to avoid false trigger caused by the lamp itself shaking.
4. Shall not be installed next to large operating machines such as ventilator/ceiling fan to avoid false triggering caused by machine vibration.

### User Notes

---

1. Microwave can penetrate walls or glass thinner than <20mm and attenuate if thicker than <20mm.
2. The driver voltage shall be stable and float within 10%.
3. Detection area will be affected by speed of motion, mounting height and movement volume.
4. Conduct test on sunny days without the lampshade which will affect the tested lux value.