

# Lighting Catalog **2017**



**LEDs are lighting the**  
*Future*

Use your smartphone to scan the QR code below



# A MESSAGE FROM BIRDDOG DISTRIBUTING

Birddog Distributing, Inc. (BDI) is committed to providing quality name brand merchandise at unbeatable prices. We value every individual customer and strive to treat each one as though they are the only one. To us, the customer's needs are our first priority & customer satisfaction is the bottom line by which we measure our success. Our goals are to provide our customers with exceptional value, quality service and most of all, reliability. Reliability nowadays can be a hard thing to find; with so many companies coming and going, customers need a supplier they can depend on to give the best prices, courteous sales people, and promptly executed orders. We pride ourselves on being just the type of company that you can depend on. With our main warehouse and offices located in one facility, our orders are usually shipped within 24 hours on a business day! We are dedicated to finding name brand products that are in demand. When you deal with Birddog Distributing, Inc., you can rest assured that your order will be executed promptly and efficiently.

## ***Charges***

Prices are subject to change without prior notice. Please visit our website for the most up to date pricing. All shipping charges are calculated during the first step of checkout before your transaction is processed. This will allow you to view the different shipping options and costs to your location before completing your transaction. Please note that some services are not available for Canada, Alaska, and Hawaii.

## ***Returns Policy***

By purchasing a product from Birddog Distributing, Inc. you agree to abide by the following return policy. Birddog Distributing, Inc. reserves the right to amend the return policy at any time without prior notice.

## ***Free Return Shipping***

A customer may return an item for any reason within the first 30 days of receiving it. For customers in the continental US a prepaid label for standard ground will be provided at no charge. All returns require either a Return Merchandise Authorization (RMA) number or a completed Return Authorization Form (RAF). To initiate the free return process and obtain an RMA number please contact BDI at (406) 586-5970 or alternatively you may download the RAF form available at [www.birddogdistributing.com/returns](http://www.birddogdistributing.com/returns). An RMA must be obtained within 30 days of receiving the product. Product must be returned complete, in like new condition, and in the original box. All returns are subject to approval and the refund policy stated below. Free return shipping does not include motifs, oversized items, and/or items shipped via freight carrier. Other exclusions apply, please see Exclusions below.

## ***Refunds***

All returns requiring a refund are subject to a 15% restocking fee and must be returned in like new condition within 30 days of receiving the product. An RMA must be obtained by calling BDI directly for any items returned for a refund. Holiday items purchased within 30 days of the intended holiday cannot be returned for a refund.

## ***Exchanges***

Customers have the option to exchange or return an item for store credit without incurring a restocking fee. An item being exchanged or returned for store credit must be returned in like new condition and in the original box within 30 days of receiving the product. An RMA must be obtained by calling BDI directly for any items exchanged. Some exclusions apply. Please see Exclusions below.

## ***Damaged Items***

Any item received damaged due to shipping must be reported to BDI within 7 business days of receiving the package. Please inspect the package upon receipt to make sure all parts are included and no damage is present. If you encounter damage or missing parts, please contact BDI at (406) 586-5970 to request a damage call tag (DCT). Once a DCT has been issued the item must be returned to the shipping company in the original packaging. If no DCT is issued an (RMA) number may be issued for return of the product to BDI for inspection of damages. Once received, if damage is found to be caused by shipping or improper packing, a replacement will be sent free of charge.

## ***Defective Items***

An item found to be defective within the warranty period must be returned to BDI in the original packaging for evaluation. In the event of a return of a defective item, an RMA number must be obtained by contacting BDI at (406) 586-5970. If the product is found to be defective a replacement will be sent free of charge.

## ***Exclusions***

The following items have a NO RETURN POLICY:

### **1. Special Orders**

Any item that is considered special order. Special order is defined as any non-inventory item or group of items which was ordered expressly and uniquely for a specific customer.

### **2. Pre-Cut LED Rope or Strip Light**

Any item that is considered a custom cut, a sample, or that has been cut or sized by Birddog Distributing, Inc. specifically for that customer's unique requirements and specifications.

### **3. Clearance, Closeout, and Overstock Items**

Any item that is sold as a partial product, open box, used, or otherwise less than new.

## ***Privacy Policy***

Your privacy is important to us at BDI. To better protect your privacy we explain our information collection practices and the choices you can make about the way your information is collected and used. To make this notice easy to find, we make it available on our website and at every point where personally identifiable information may be requested.

## ***How To Contact Us***

Should you have other questions or concerns, please contact us by:

calling our main office at 1-406-586-5970 or sending us an email to [support@birddogdistributing.com](mailto:support@birddogdistributing.com).

## INCANDESCENT ROPE LIGHTING

Incandescent 1/2" 2-Wire Rope Lights	4
Incandescent Rope Light Accessory Kits	4
Compression Style Rope Light Accessories	4

## LED ROPE LIGHTING

LED 1/2" 2-Wire Rope Lights	5
LED Rope Light Accessory Kit	5

## ROPE LIGHTING ACCESSORIES

LED Rope Light Power Cords	6
Rope Light Weatherproofing Supplies	6
Rope Light Male-to-Male Connectors	6
Rope Light Y-Extension	6
Rope Light Female-to-Female Extensions	6
Rope Light End Caps	6
Rope Light L-Connectors	6
Rope Light Splices	6
Rope Light T-Connectors	6
Rope Light Controllers	6
1/2" Rope Light Mounting Clips	6
1/2" Rope Light Mounting Track	7
Rope Light X-Connector	7
Rope Light Blackout Tubing	7
Rope Light Timers	7
Rope Light Mounting Stakes	7
Rope Light Storage Spools	7
Heat Gun	7
Rope Light Cutters	7

## RGB ROPE LIGHTING

LED 4-Wire RGB Rope Lights	8
LED 4-Wire RGB Rope Light Accessories	8

## LED NEON ROPE LIGHTING

LED 2-Wire Neon Rope Lights	9
LED 4-Wire RGB Neon Rope Lights	9
LED Neon Rope Light Accessories	10

## SMD LED NEON STRIP LIGHTING

LED 2-Wire SMD Neon Strip Light	11
LED SMD Neon Strip Light Accessories	11

## 120V LED STRIP LIGHTING

LED 120V 2-Wire Strip Lights	12
LED 120V RGB 4-Wire Strip Lights	13
LED 120V Plant Growth Strip Lights	13
LED 120V Strip Light Accessories	14

## 12V LED STRIP LIGHTING

LED 12V Variable White Strip Lights	15
LED 12V Zig-Zag Strip Lights	15
LED 12V 3538 Strip Lights	16
LED 12V 5050 Strip Lights	16

## 12V LED STRIP LIGHT ACCESSORIES

LED 12V Strip Light Power Supplies	17
LED 12V Strip Light Power Connectors	17
LED 12V Strip Light Dimmers	17
LED 12V Strip Light Splitters	17
LED 12V Strip Light Connectors	17
LED 12V Strip Light Jumpers	17
LED 12V Strip Light Splices	17

## 12V RGB LED STRIP LIGHTING

LED 12V RGB 5050 Strip Lights	18
LED 12V RGB Strip Light Accessories	18
LED 12V RGB Strip Light Bundles	19

## LED OUTLET & SWITCH COVERS

LED SnapPower Guidelight Covers	20
---------------------------------	----

## LED PUCK LIGHT

LED 9.0W Puck Light	20
LED 4.5W Puck Light	20

## LED RIGID LIGHT BARS

LED Rigid Light Bars	20
----------------------	----

## LED UNDER CABINET LIGHTS

LED Flush Mount Under Cabinet Lights	21
LED Corner Mount Under Cabinet Lights	21
LED Under Cabinet Light Accessories	21

## LED RETROFIT BULBS

LED 14W - 120W Corn Cob Retrofit Bulbs	22
--	----

## LED PANEL LIGHTING

LED 6" Round Panel Lights	22
LED 2' x 4' Panel Lights	22

## LED T8 BULBS

LED 4' Economy T8 Tube Lights	23
LED 4' DLC & UL Listed T8 Tube Lights	23
LED 2' & 3' T8 Tube Lights	24
LED 2' U-Bend T8 Tube Lights	24
LED 8' T8 Tube Lights	24

## LED COMMERCIAL LIGHTING

LED Troffer Lights	25
LED Vapor Tight Strip Fixture	25
LED Area Lights	25
LED Industrial High-Bay Lights	25
LED Retail High-Bay Lights	25
LED UFO High-Bay Lights	25
LED Shoebox Lights	26
LED Low Bay Canopy Lights	26
LED Wall Pack Lights	26
LED Flood Lights	26
LED Roadway Lights	26

## PARTY LIGHTING

LED Pixie Berry Lights	27
LED RGB Vase Base Light	27
LED Battery Powered Mini Light Sets	27
LED Battery Powered Micro Light Sets	27

## CHILI PEPPER LIGHTS

Chili Pepper Wreath	28
Chili Pepper Clusters	28
Chili Pepper String Lights & Bulbs	28

## LED STRING LIGHT SETS

LED G12, C6, C7 & C9 String Light Sets	28
--	----

## CUSTOM STRING LIGHT SPOOLS

C7 500' Custom String Light Spools	29
C9 500' Custom String Light Spools	29
SPT1 - SPT2 Bulk Wire	29
SPT1 - SPT2 Male & Female Plugs	29
SPT1 - SPT2 C7 & C9 Sockets	29

## STRING LIGHT REPLACEMENT BULBS

LED G20 Bulbs	29
LED G30 Bulbs	29
LED C7 Bulbs	29
LED C9 Bulbs	29
Incandescent C7 Bulbs	29
Incandescent C9 Bulbs	29

## SEASONAL MOTIFS

Heart Motifs	30
Cupid Motif	30
LED Flur De Lis Motif	30
LED Jester Motif	30
Dove Motifs	30
LED Cross Motifs	30
LED Bethlehem Star Motif	30
LED Shooting Star Motif	30
LED Double Star Motifs	30
3-D Butterfly Motif	30
LED Easter Bunny Motif	30
LED USA Flag Motif	30
LED Shamrock Motif	30
LED Palm Tree Motifs	30
Flamingo Motif	30
Lamp Post Motifs	30

## HALLOWEEN MOTIFS & LIGHTS

Halloween Motifs	31
Halloween Inflatable Displays	31
Halloween Flicker Flame Bulbs	31
Halloween Flicker Flame String Lights	31
Halloween Mini Light String Sets	31

# ROPE LIGHTS 2-WIRE 1/2" 120V INCANDESCENT ROPE LIGHTS



## 2-Wire 1/2" Incandescent 120 Volt Rope Lights-150 Foot Spools

- 120 Volt, Max Run 150'
- Steady burn only
- Cutable every 36"
- High quality anti-aging PVC, UV protected
- Horizontal bulb placement
- 0.25 W/bulb - 3.0 W/ft, 1" spacing
- Use indoors and outdoors
- Accessory kit included with each spool



Accessories included with 150' spool:

- (1) Power Cord (pre installed)
- (1) Power Connector (pre installed)
- (1) End Cap (pre installed)

**Product Code**      **Color**      **Per Spool**  
**RLI122WC\***      **\*SPECIFY**      **\$79.99**

\*Colors: A-Amber, C-Clear, G-Green, PU-Purple, W-White



### Omnidirectional Bulb Placement

## 2-WIRE 1/2" 120V INCANDESCENT ROPE LIGHT ACCESSORIES



**6' POWER CORD**  
 INCANDESCENT 2-WIRE, 1/2", 120 VOLT  
 Use to power up to a 150' run of incan. rope light. Includes power connector and end cap.

**Item Number**      **Each**  
**RLI120A-PKIT**      **\$6.99**



**20 PIECE ACCESSORY KIT**  
 INCANDESCENT 2-WIRE, 1/2", 120 VOLT  
 20 Piece accessory kit, includes 5 ea. power cords, power connectors, end caps, splices.

**Item Number**      **Each**  
**206ACKIT1**      **\$26.99**



**70 PIECE ACCESSORY KIT**  
 INCANDESCENT 2-WIRE, 1/2", 120 VOLT  
 70 Piece accessory kit, includes 5 ea. power cords, power connectors, end caps, splices, and 50 C Clips.

**Item Number**      **Each**  
**206ACKIT2**      **\$29.99**



**POWER CONNECTOR**  
 2-WIRE, 1/2" (2/PACK)  
 Use to connect LED or incandescent rope light to an accessory or power cord.

**Item Number**      **Each**  
**RLI120A-CON**      **\$0.18**



**MINI FLASHING CONTROLLER**  
 2-WIRE, 1/2", 120 VOLT  
 Use this controller with rope lights to adjust flashing speed. Max run 44'.

**PRODUCT CODE**      **EACH**  
**CNTRLS-R2CMIN**      **\$24.99**



**FLASHING CONTROLLER**  
 2-WIRE, 1/2", 120 VOLT, INDOOR USE ONLY  
 6 function controller, use with rope lights to add various flashing effects. Max run 150'.

**PRODUCT CODE**      **EACH**  
**CNTRLS-R2CMAX**      **\$29.99**



**POWER CONNECTOR**  
 COMPRESSION, 2-WIRE, 1/2" (5-PACK)  
 Required to connect incandescent rope lights to a compression type accessory.

**Item Number**      **Each**  
**206SB-CON**      **\$3.99**



**SPLICE CONNECTOR**  
 COMPRESSION, 2-WIRE, 1/2" (5-PACK)  
 Use for joining 2 sections of rope lights. Silicone sealant recommended, sold separately.

**Item Number**      **Each**  
**206SB-CON**      **\$9.99**



**COMPRESSION T CONNECTOR**  
 COMPRESSION, 2-WIRE, 1/2" (5-PACK)  
 Use to connect a perpendicular run of rope lights. Power connectors not required.

**Item Number**      **Each**  
**206SB-T**      **\$9.99**



**2' FEMALE-FEMALE EXTENSION**  
 COMPRESSION, 2-WIRE, 1/2" (5-PACK)  
 Use to connect to runs of rope lights where lighting is not required or to span a gap.

**Item Number**      **Each**  
**206SB-2FF**      **\$6.99**



**MALE-FEMALE EXTENSION**  
 COMPRESSION, 2-WIRE, 1/2" (5-PACK)  
 Use to extend the length of a compression type power cord or y-extension. 6 ft. long.

**Item Number**      **Each**  
**206SB-6MF**      **\$9.99**



**Y EXTENSION**  
 COMPRESSION, 2-WIRE, 1/2" (5-PACK)  
 Use to extend the length of a compression type power cord or y-extension. 1.5 ft. long.

**Item Number**      **Each**  
**206SB-EXT-Y**      **\$9.99**

# 2-WIRE 1/2" 120V LED ROPE LIGHTS **ROPE LIGHTS**



## 2-Wire 1/2" Steady Burn LED Rope Lights 65 Foot or 148 Foot Spools

For custom lengths please visit our website or call 406-586-5970

- 120 Volt, 0.8 Watts per foot, UV protected
- 1/2" diameter, 2-wire with 1" LED spacing
- Omni-directional bulb placement
- Extended life up to 100,000 hours
- Cutable every 19.5"
- Use indoors and outdoors - Max run 600'
- Temperature rating: -60°F - 220°F

Accessories included with each spool:

- (1) Power Cord with Power Connector (pre-installed)
- (1) End Cap (pre-installed)

Item Number	Color	Length	Per Spool
RLL120H-20*	*SPECIFY	65'	\$69.99

\*Colors: CW-Cool White, WW-Warm White

Item Number	Color	Length	Per Spool
RLL120H-45*	*SPECIFY	148'	\$149.99

\*Colors: B-Blue, CW-Cool White, G-Green, MC-Multi Color, O-Orange, PU-Fuchsia, R-Red, RWB-Red White & Blue, WW-Warm White, Y-Yellow



### Omnidirectional Bulb Placement

#### Directional Bulb Placement Spools

Item Number	Color	Length	Per Spool
RLL120V-45*	*SPECIFY	148'	\$149.99

\*Colors: CW-Cool White, WW-Warm White



### Directional Bulb Placement

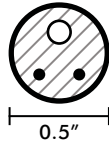


#### 83 PIECE LED ACCESSORY KIT

2-WIRE, 1/2"

81 Piece accessory kit, includes (1) 5' power cord, (19) power connectors, (2) T connectors, (5) in-line splices, (5) end caps, (1) 5' female-to-female extension, and (50) C Clips

Item Number	Each
LEDACC-KIT81PC	\$24.99



Blue



Cool White



Green



Gold



Multi Color



Red



Fuchsia



Orange



Red White & Blue



Warm White



Yellow

# ROPE LIGHTS 2-WIRE 1/2" 120V ROPE LIGHT ACCESSORIES



**5' LED POWER CORD KIT**  
2-WIRE, 120 VOLT, 1/2"  
Use to power up to a 150' run of LED rope lights. Includes power connector and end cap.  
**Item Number** **Each**  
RLL120A-P5 **\$6.99**



**LED HIGH OUTPUT RECTIFIER**  
2-WIRE, 120 VOLT, 1/2"  
Runs up to 600' of 120V LED rope lights. 8 Amps max, power cord included.  
**Item Number** **Each**  
RLL120A-HOR **\$54.99**



**HEAT SHRINK TAPE KIT**  
3 SIZES: 12V, 3/8-1/2", NEON/RGB  
Helps make a weather-tight seal on rope and strip light connections. Kit seals 2 connections.  
**Item Number** **Each**  
MISC-OUTDOORS **\$5.99-7.99**



**MALE-MALE CONNECTOR**  
2-WIRE, 1/2"  
Use to connect 2 female rope light accessories together.  
**Item Number** **Each**  
RLL120A-MM **\$3.99**



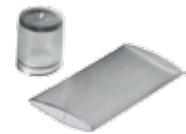
**18" Y EXTENSION**  
2-WIRE, 1/2"  
Use to split 1 run of rope light into 2 separate runs. Includes power connectors.  
**Item Number** **Each**  
URL12-Y **\$6.99**



**FEMALE-FEMALE EXTENSION**  
2-WIRE, 1/2", 5', 6' OR 10'  
Use to connect to runs of rope lights where lighting is not required or span a gap.  
**Item Number** **Each**  
RLL120A-FF **\$6.99-9.99**



**END CAP**  
1/2"  
Use to terminate a rope light run. Silicone sealant recommended, sold separately.  
**Item Number** **Each**  
URL12-END **\$0.39**



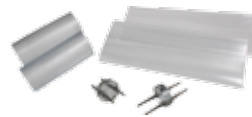
**PREMIUM END CAP**  
1/2" (3/PACK)  
Use to terminate a rope light run. Includes shrink tubing for secure attachment.  
**Item Number** **Each**  
106P12-END **\$2.99**



**L CONNECTOR**  
2-WIRE, 1/2"  
Use for making 90 degree turns. Includes 1 "L" connector and 2 power connectors.  
**Item Number** **Each**  
URL12-L **\$2.99**



**IN LINE SPLICE**  
2-WIRE, 1/2" (3/PACK)  
Use for joining 2 sections of rope lights. Silicone sealant recommended, sold separately.  
**Item Number** **Each**  
URL12-INLSPL **\$6.99**



**INVISIBLE SPLICE KIT**  
2-WIRE, 1/2" (2/PACK)  
Use to create a virtually invisible, seamless splice. Includes 2 power connectors & 2 shrink sleeves.  
**Item Number** **Each**  
URL12-SPLKIT **\$3.99**



**T CONNECTOR**  
2-WIRE, 1/2"  
Use to connect a perpendicular run of rope light. Includes 1 T connector and 3 power connectors.  
**Item Number** **Each**  
URL12-T **\$4.99**



**MULTI-FUNCTION CONTROLLER**  
2-WIRE, 120 VOLT, RF REMOTE CONTROL  
Powers and controls 120V LED strip lights. Dimmer, timer, and 8 dynamic effect settings.  
**Item Number** **Each**  
URL120-DIM **\$59.99**



**FADING CONTROLLER**  
120 VOLT, 2 CHANNELS  
Use to add fading effects to your lights. 600W/5.0A. Indoor use only.  
**Item Number** **Each**  
CNTRLS-FADER **\$39.99**



**FLASHING CONTROLLER**  
120 VOLT, 2 CHANNELS  
Use to add flashing effects to your lights. 960W/8.0A. Indoor use only.  
**Item Number** **Each**  
CNTRLS-FLASHER **\$49.99**



**LED MINI INLINE CONTROLLER**  
120 VOLT, 8 SETTINGS  
Push button multi function controller. Provides 8 different flash or fade effects. Indoor use only.  
**Item Number** **Each**  
RLL120A-LEDMCNTRL **\$24.99**



**ILLUMICLIP® STYLE CLIPS**  
1/2"/3/8" (21/BAG)  
Use to attach to plastic landscape edging, 1" boat/RV railing, or any other 1" diameter solid material  
**Item Number** **Each**  
10612-ILCLIP **\$9.99**



**CROCODILE CLIPS**  
1/2" (25/BAG)  
Can be fastened together to align multiple runs next to each other. Screws not included.  
**Item Number** **Each**  
URL12-CRCL **\$9.99**



**P STYLE CLIPS**  
1/2" (50/BAG)  
Use to securely attach rope lights to a solid surface. Best for outdoor use.  
**Item Number** **Each**  
URL12-PClip **\$4.75**



**C STYLE CLIPS**  
1/2" (50/BAG)  
Use to attach rope lights to a solid surface. Recommended for indoor use.  
**Item Number** **Each**  
URL12-CCLIP **\$6.99**

# 2-WIRE 1/2" 120V ROPE LIGHT ACCESSORIES **ROPE LIGHTS**



## ROPE LIGHT SEALANT

1.0 OZ. SILICONE TUBE  
Use with rope lights around connections where moisture may be present.

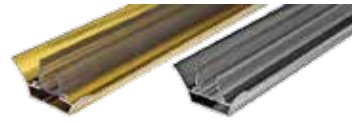
<b>Item Number</b>	<b>Each</b>
MISC-GLUE	\$4.99



## 39" MOUNTING TRACK

1/2", CLEAR PVC  
Use to create completely straight lines for your rope lighting project.

<b>Item Number</b>	<b>Each</b>
URL12-TRACK	\$1.99



## 6' REFLECTIVE TRACK

1/2", CLEAR PVC IN ALUMINUM TRACK  
Use to securely attach rope lights to a solid surface. Available in gold or silver.

<b>Item Number</b>	<b>Each</b>
10612-REF*(G,S)	\$21.99



## X CONNECTOR

2-WIRE, 1/2"  
Use to connect 4 separate rope light runs in an X configuration.

<b>Item Number</b>	<b>Each</b>
106P12-X	\$6.99



## BLACKOUT TUBING

3/8" - 1/2" ROPE LIGHTS  
Use to hide specific sections of rope light. Sold in 1' intervals. Specify length when ordering.

<b>Item Number</b>	<b>Price</b>
10612-BOTUBE	\$0.99/FT



## 24 HOUR TIMER

120 VOLT, UL LISTED  
Use to set lights to come on and off in a 24 hour period. Indoor use only.

<b>Item Number</b>	<b>Each</b>
CNTRLS-24HR	\$14.99



## RAINTIGHT PHOTOCELL TIMER

120 VOLT, UL LISTED  
Outdoor rated timer has multiple time length settings including dawn to dusk.

<b>Item Number</b>	<b>Each</b>
CNTRLS-ODTX2	\$19.99



## INDOOR REMOTE POWER SWITCH

120 VOLT (3/PACK)  
Control remotely up to 3 outlets up to 60' away. Max load Each 10A. Indoor use only.

<b>Item Number</b>	<b>Each</b>
CNTRLS-ROUT	\$29.99



## CABLE TIES

8" (100/BAG)  
Self locking cable ties can be used in a wide variety of applications. Specify color when ordering.

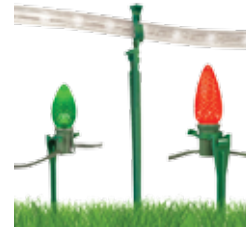
<b>Item Number</b>	<b>Each</b>
MISC-TIE8	\$4.99



## CABLE TIES

4" (100/BAG)  
Self locking cable ties can be used in a wide variety of applications. Specify color when ordering.

<b>Item Number</b>	<b>Each</b>
MISC-TIE4	\$2.99



## ABOVE GROUND LIGHT STAKES

1/2" OR 3/8" ROPE LIGHT, C7 OR C9 BULBS  
Use to secure above ground rope lights or Christmas string lights. 25 Stakes per pack.

<b>Item Number</b>	<b>Each</b>
ML-YS*(8" or 15")	\$9.99-\$16.99



## SUCTION CUPS

2" DIAMETER (5/PACK)  
Suction cup mount adheres to any smooth surface. Includes 4" cable ties.

<b>Item Number</b>	<b>Each</b>
MISC-WINMNT	\$1.99



## STORAGE SPOOL

CAPACITY: 1/2"-150', RGB-65'  
Use these spools to safely store your rope light decorations until your next occasion.

<b>Item Number</b>	<b>Each</b>
MISC-SPOOL	\$4.99



## HEAT GUN

DUAL TEMPERATURE HEAT  
Perfect for making a watertight seal on all rope lights with our outdoor shrink sleeve kits.

<b>Item Number</b>	<b>Each</b>
MISC-HG	\$29.99



## ROPE LIGHT CUTTER

TEFLON COATED HEAT TREATED STEEL  
Use to cut rope light cleanly and easily. Includes nylon belt case.

<b>Item Number</b>	<b>Each</b>
MISC-RLC	\$12.99



## OUTDOOR POWER STAKE

120 VOLT, 3 OUTLETS  
Settings allow: always on, on at dusk and off in 2-4-6-8 hour intervals, turn on at dusk-off at dawn, and manual off. 6' Power cord, with 2 piece stake, waterproof construction.

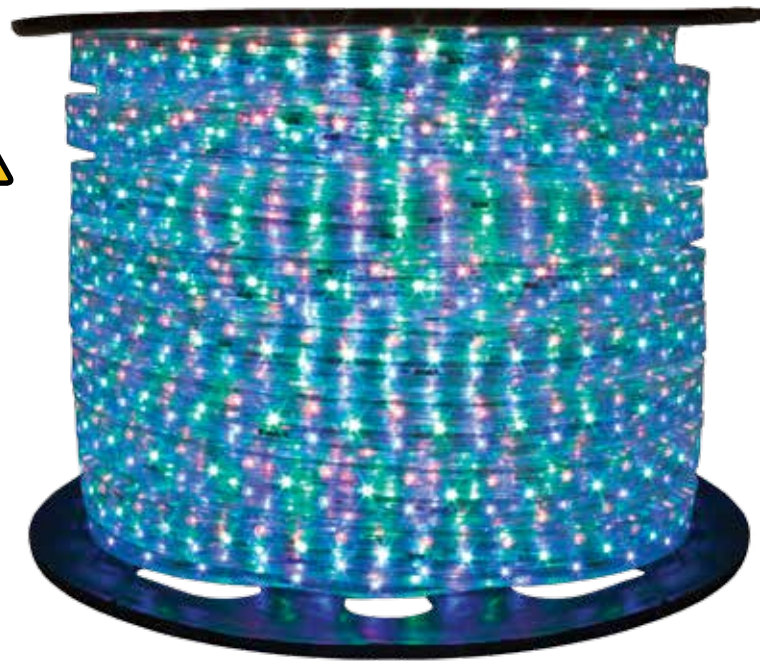
<b>Item Number</b>	<b>Each</b>
MISC-PWRSTK6-G	\$24.99

# ROPE LIGHTS 4-WIRE 3/4" 120V RGB LED ROPE LIGHTS



## 4-Wire Color Changing RGB LED Rope Lights 65 Foot or 148 Foot Spools

For custom lengths please visit our website or call 406-586-5970



- 120 Volt, 1.5 Watts per foot, UV protected
- 3/4" W x 3/8" H, 4-wire with 1" LED spacing
- Directional bulb placement only
- Extended life up to 100,000 hours
- Cutable every 39"
- Use indoors and outdoors - Max run 165' with mini controller
- Controller required for use, sold separately.

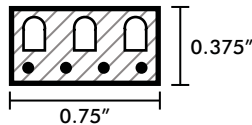
Accessories included with each spool:

- (1) Power Connector (pre installed)
- (1) RGB End Cap (pre installed)

Item Number	Length	Per Spool
RLL120V-20RGB	65'	\$259.99
RLL120V-45RGB	148'	\$499.99



**Directional Bulb Placement**



**RGB DELUXE CONTROLLER**  
4-WIRE, 120 VOLT, WEATHERPROOF  
RF remote controller. Use up to 151' of  
RGB LED rope light. Brightness and effect control.

Item Number	Each
UNI-WPRGBC	\$59.99



**RGB MINI CONTROLLER**  
4-WIRE, 120 VOLT, INDOOR USE ONLY  
7 Effect, single button inline controller.  
Runs up to 165' of RGB LED rope light.

Item Number	Each
UNI-WPRGBC	\$29.99

## 4-WIRE 120V RGB LED ROPE LIGHT ACCESSORIES



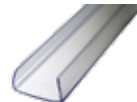
**INLINE SPLICE**  
4-WIRE, RGB  
Use for joining 2 sections of RGB LED rope lights.  
Silicone sealant recommended, sold separately.

Item Number	Each
RLL120A-RGBSPL	\$1.99



**END CAP**  
4-WIRE, RGB  
Use to terminate a RGB LED rope light run.  
Silicone sealant recommended, sold separately.

Item Number	Each
RLL120A-RGBEND	\$1.99



**39" MOUNTING TRACK**  
3/4", RGB  
Use to create completely straight lines  
in your RGB LED rope lighting project.

Item Number	Each
RLL120A-RGBTRK	\$3.49



**MOUNTING CLIP**  
3/4", RGB (50/PACK)  
Use to attach RGB LED rope lights to a  
solid surface. Screws not included.

Item Number	Each
RLL120A-RGBCLIP	\$14.99



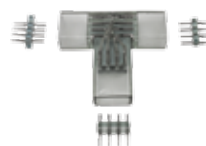
**18" Y EXTENSION**  
4-WIRE, RGB  
Use to split 1 run of RGB LED rope light into  
2 separate runs. Includes 3 power connectors.

Item Number	Each
RLL120A-RGBY	\$9.99



**5' FEMALE TO FEMALE EXTENSION**  
4-WIRE, RGB  
Use to connect to runs of RGB LED rope lights  
where lighting is not required or span a gap.

Item Number	Each
RLL120A-RGB	\$9.99



**RGB T CONNECTOR**  
4-WIRE, RGB  
Ideal for adding a section perpendicular to  
a main run. Includes 3 power connectors.

Item Number	Each
RLL120A-RGBT	\$4.99



**MALE-MALE CONNECTOR**  
4-WIRE, RGB  
Use to connect 2 female RGB LED  
rope light accessories together.

Item Number	Each
RLL120A-RGBMM	\$3.99



# 2 & 4-WIRE 120V LED NEON ROPE LIGHTS **ROPE LIGHTS**



Blue



Cool White



Green



Orange



Pink



Red



Warm White



Yellow

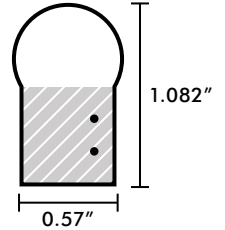


**Brilliant™**  
Brand Lighting

## 2-Wire Steady Burn LED Neon 120 Volt Rope Lights - 148 Foot Spools

For custom lengths please visit our website or call 406-586-5970

- An affordable alternative to traditional glass neon
- 120 Volt, 1.08 Watts per foot, UV protected
- 0.55" x 1.02", 2-wire with 0.49" LED spacing
- Cuttable every 34-39" (varies by color)
- Directional bulb placement only
- Extended life up to 50,000 hours
- Use indoors and outdoors - Max Run 148'
- Accessory kit included with each spool



Accessories included with 148' spool:

- (1) Power Cord (pre-installed)
- (1) End Cap (pre-installed)
- (2) Heat Shrink Sleeves



**Directional Bulb Placement**

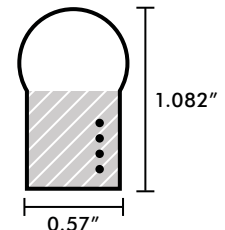
Item Number	Color	148' Spool
NRL-45B	Blue	\$399.99
NRL-45CW	Cool White	\$499.99
NRL-45G	Green	\$459.99
NRL-45O	Orange	\$419.99
NRL-45P	Pink	\$549.99
NRL-45R	Red	\$349.99
NRL-45WW	Warm White	\$499.99
NRL-45Y	Yellow	\$399.99



## 4-Wire Chasing/Steady Burn RGB LED Neon 120 Volt Rope Light - 148 Foot Spool

For custom lengths please visit our website or call 406-586-5970

- An affordable alternative to traditional glass neon
- 120 Volt, 1.08 Watts per foot, UV protected
- 0.55" x 1.02", 2-wire with 0.49" LED spacing
- Directional bulb placement only
- Extended life up to 50,000 hours
- Cuttable in 52.25" lengths
- Use indoors and outdoors - Max Run 151'
- Accessory kit included with each spool



Accessories included with 148' spool:

- (1) "Pig Tail" Power Cord (pre-installed)
- (1) End Cap (pre-installed)
- (2) Heat Shrink Sleeves



**Directional Bulb Placement**

Item Number	Length	Per Spool
NRL-45RGB	148'	\$599.99



# ROPE LIGHTS 2 & 4-WIRE 120V LED NEON ROPE LIGHT ACCESSORIES



## POWER CORD

2-WIRE

Use to power up to a 151' run of neon rope lights. Includes power connector and heat shrink sleeve.

**Item Number**      **Each**  
**NRL-2PKIT**            **\$8.99**



## POWER CONNECTOR

2-WIRE

Use to connect neon rope lights to all accessories and controllers.

**Item Number**      **Each**  
**NRL-2CON**            **\$0.18**



## IN LINE SPLICE

2-WIRE

Use for joining 2 sections of neon rope lights. Includes power connector and heat shrink sleeve.

**Item Number**      **Each**  
**NRL-2ICON**            **\$2.99**



## 6" FEMALE-FEMALE EXTENSION

2-WIRE

Use for small gaps where no light is needed. Includes power connectors and heat shrink sleeves.

**Item Number**      **Each**  
**NRL-2EXT**            **\$6.99**



## T CONNECTOR

2-WIRE ONLY

Use to connect a perpendicular run of neon rope light. Includes power connectors and heat shrink sleeves.

**Item Number**      **Each**  
**NRL-2TCON**            **\$3.99**



## L CONNECTOR

OUTSIDE CORNER, 2-WIRE ONLY

Use for making 90 degree turns. Includes power connectors and heat shrink sleeves.

**Item Number**      **Each**  
**NRL-2OLCON**            **\$3.59**



## L CONNECTOR

INSIDE CORNER, 2-WIRE ONLY

Use for making 90 degree turns. Includes power connectors and heat shrink sleeves.

**Item Number**      **Each**  
**NRL-2ILCON**            **\$3.59**



## UPRIGHT L CONNECTOR

INSIDE/OUTSIDE CORNER, 2-WIRE ONLY

Use for making 90 degree turns. Includes power connectors and heat shrink sleeves.

**Item Number**      **Each**  
**NRL-2ULCON**            **\$3.59**

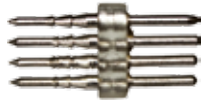


## POWER CORD

RGB 4-WIRE

Use to power up to a 151' run of neon rope lights. Includes power connector and heat shrink sleeve.

**Item Number**      **Each**  
**NRL-4PKIT**            **\$11.99**



## POWER CONNECTOR

RGB 4-WIRE

Use to connect neon rope lights to all accessories and controllers.

**Item Number**      **Each**  
**NRL-4CON**            **\$0.18**



## IN LINE SPLICE

RGB 4-WIRE

Use for joining 2 sections of neon rope lights. Includes power connector and heat shrink sleeve.

**Item Number**      **Each**  
**NRL-4ICON**            **\$3.19**



## 6" FEMALE-FEMALE EXTENSION

RGB 4-WIRE

Use for small gaps where no light is needed. Includes power connectors and heat shrink sleeves.

**Item Number**      **Each**  
**NRL-4EXT**            **\$7.99**



## END CAP

2-WIRE OR RGB 4-WIRE

Use to terminate a neon rope light run. Silicone sealant recommended, sold separately.

**Item Number**      **Each**  
**NRL-END**            **\$0.49**



## RGB REMOTE CONTROLLER

4-WIRE, 120 VOLT, WEATHERPROOF RF remote controller. Use up to 151' of RGB LED neon rope light. Brightness and effect control.

**Item Number**      **Each**  
**STRP12050A-WPRGBC**      **\$59.99**



## 39" MOUNTING TRACK

2-WIRE OR RGB 4-WIRE

Use to create completely straight lines in your neon rope light project.

**Item Number**      **Each**  
**NRL-TRK**            **\$3.99**



## 2" ALUMINUM CLIP

2-WIRE OR RGB 4-WIRE

Use to attach neon rope lights to a solid surface. Requires screws or adhesive; not included.

**Item Number**      **Each**  
**NRL-2-ALTRK**            **\$0.69**

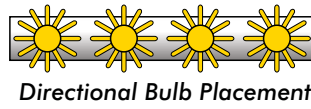
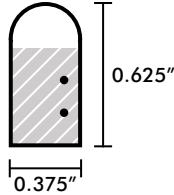
# 2-WIRE 120V SMD LED NEON STRIP LIGHTS **STRIP LIGHTS**



## 2-Wire Steady Burn SMD LED Neon 120 Volt Strip Lights - 148 Foot Spools

Please visit our website or call 1-406-586-5970 for custom cuts

- An affordable alternative to traditional glass neon
- 120 Volt, 1.64 Watts per foot, UV protected
- 0.375" x 0.625", 2-wire with 36 LEDs per foot
- Cuttable every 19.5"
- Directional bulb placement only
- Extended life up to 50,000 hours
- Use indoors and outdoors - Max Run 148'
- Accessory kit included with each spool



Accessories included with 148' spool:

- (2) Power Cords (1 pre-installed)
- (2) Power Connectors (1 pre-installed)
- (2) End Cap (1 pre-installed)

Item Number	Color	148' Spool
NSMD-45*	*SPECIFY	\$399.99

\*Colors: B-Blue, CW-Cool White, G-Green, O-Orange, P-Pink, R-Red, WW-Warm White, Y-Yellow



## 2-WIRE 120V SMD LED NEON STRIP LIGHT ACCESSORIES



### 31" POWER CORD

2-WIRE, 120V

Use to power up to a 151' run of SMD neon lights. Includes 1 power connector and 1 end cap.

Item Number	Each
NSMDA-PWRS	\$5.99



### 5' POWER CORD

2-WIRE, 120V

Use to power up to a 151' run of SMD neon lights. Includes 1 power connector and 1 end cap.

Item Number	Each
NSMDA-PWRL	\$6.99



### POWER CONNECTOR

2-WIRE, SMD NEON (5 PACK)

Use to connect SMD neon rope light to all accessories.

Item Number	Each
NSMDA-CON5	\$1.99



### END CAP

2-WIRE, SMD NEON (5 PACK)

Use to terminate an SMD neon rope light run. Silicone sealant recommended, sold separately.

Item Number	Each
NSMDA-END5	\$1.99

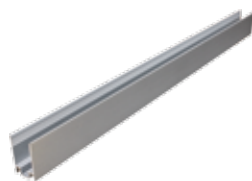


### 6" FEMALE-FEMALE EXTENSION

2-WIRE OR RGB 4-WIRE

Use for small gaps where no light is needed. Includes power connectors and heat shrink sleeves.

Item Number	Each
NSMDA-2EXT	\$6.99



### 8" ALUMINUM CLIP

2-WIRE, SMD NEON

Use to attach SMD neon rope lights to a solid surface.

Item Number	Each
NSMDA-CLIP	\$0.69

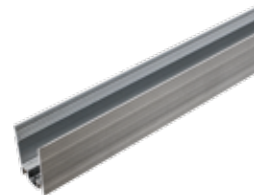


### 39" PLASTIC TRACK

2-WIRE, SMD NEON

Use to create completely straight lines in your SMD neon rope light project.

Item Number	Each
NSMDA-TRK	\$1.89



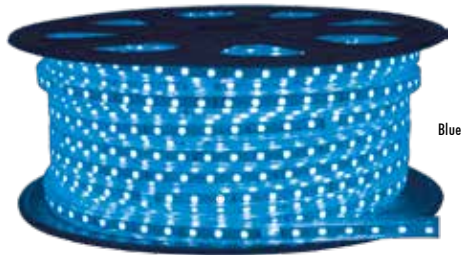
### 39" ALUMINUM TRACK

2-WIRE, SMD NEON

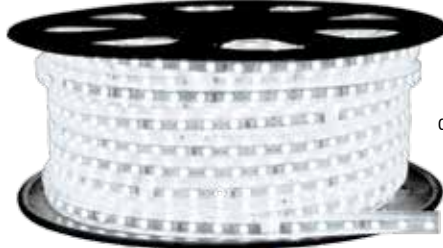
Use to create completely straight lines in your SMD neon rope light project.

Item Number	Each
NSMDA-ALTRK	\$2.99

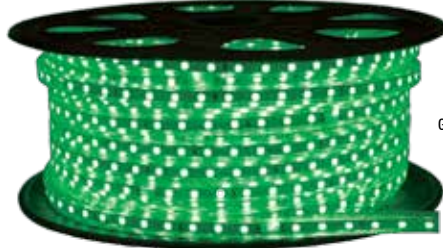
# STRIP LIGHTS 2-WIRE 120V SMD LED STRIP LIGHTS



Blue



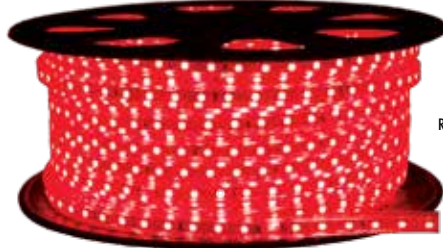
Cool White



Green



Pink



Red



Warm White



Yellow



## SMD 3528 120 Volt LED Strip Lights Single Chip - Standard Output Brightness

- 65 or 148' Spools or Custom Cuts (call for pricing)
- 120 Volt AC
- Lifetime: 50,000 Hours
- Power Consumption: 2.1W/ft
- Cutting Interval: 19.5"
- Dimensions: 0.4375" W x 0.25" H
- IP65 Waterproof rating
- Beam Angle: 120°
- Dimmable
- Bulb Placement: Directional
- Bulb Spacing: 0.56"
- Max Run: 330'
- Output: 10 lumens/LED

Accessories included with Each spool:

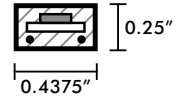
- (1) 2' Standard Power Cord (pre-installed)
- (1) End Cap (pre-installed)

Item Number	Length	Per Spool
STRP12035-20*	65'	\$99.99
STRP12035-45*	148'	\$199.99

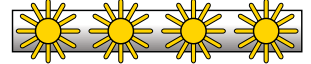
\*Specify Color when ordering: B-Blue, CW-Cool White, G-Green, P-Pink, R-Red, WW-Warm White, Y-Yellow



120 VOLT



Directional  
Bulb Placement



## SMD 5050 120 Volt LED Strip Lights Tri-Chip - High Output Brightness

- 65 or 148' Spools or Custom Cuts (call for pricing)
- 120 Volt AC
- Lifetime: 50,000 Hours
- Power Consumption: 2.1W/ft
- Cutting Interval: 19.5"
- Dimensions: 0.5625" W x 0.3125" H
- IP65 Waterproof rating
- Beam Angle: 120°
- Dimmable
- Bulb Placement: Directional
- Bulb Spacing: 0.44"
- Max Run: 330'
- Output: 18 lumens/LED

Accessories included with Each spool:

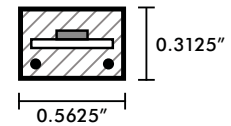
- (1) 2' Standard Power Cord (pre-installed)
- (1) End Cap (pre-installed)

Item Number	Length	Per Spool
STRP12050-20*	65'	\$149.99
STRP12050-45*	148'	\$299.99

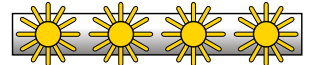
\*Specify Color when ordering: B-Blue, CW-Cool White, G-Green, P-Pink, R-Red, WW-Warm White, Y-Yellow



120 VOLT



Directional  
Bulb Placement



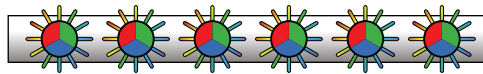
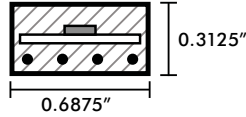
# 4-WIRE RGB & PLANT GROWTH 120V SMD LED STRIP LIGHTS **STRIP LIGHTS**



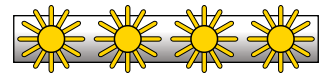
## SMD 5050 RGB 120 Volt LED Strip Lights

### Tri-Chip - High Output Brightness

- 65 or 148' Spools or Custom Cuts (call for pricing)
- 120 Volt AC
- Lifetime: 50,000 Hours
- Power Consumption: 3.7W/ft
- Cutting Interval: 19.5"
- Dimensions: 0.6875" W x 0.3125" H
- IP65 Waterproof rating
- Beam Angle: 120°
- Dimmable
- Bulb Placement: Directional
- Bulb Spacing: 0.44"
- Max Run: 330'
- Output: 12-14 lumens/LED



Features Tri-Chip Color Changing Technology



Directional Bulb Placement

### Accessories included with Each spool:

- (1) Mini In-Line RGB Controller
- (1) End Cap (pre-installed)

Item Number	Length	Per Spool
STRP12050-20RGB	65'	\$259.99
STRP12050-45RGB	148'	\$499.99



## THE ONLY 120 VOLT SMD 5050 LED STRIP LIGHTING THAT IS SPECIFICALLY FOR GROWING PLANTS INDOORS!

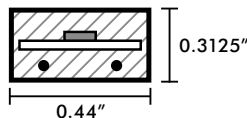
Our all new 120 Volt SMD 5050 LED Strip Light is specifically designed for plant growth and is perfect for any indoor plant grower. The ability to choose the length in 19.5" increments is very convenient for the grower that has only a limited amount of space. The durable material that covers the LEDs is able to handle high humidity rates that are common for the average grower all the way to the hydroponic grower. The Strip Lighting features a repeating pattern of 4 Red (660-665nm) LEDs and 1 Blue (450-455nm) LED that have been proven to give whatever type of plant that you are growing optimal growth potential. This lighting is also dimmable for the plant grower that may not need as much light and you can easily use a timer for hands free on/off lighting.



## SMD 5050 120 Volt LED Plant Growth Strip Lights

### Tri-Chip - High Output Brightness

- 148' Spools or Custom Cuts (call for pricing)
- 120 Volt AC
- Lifetime: 50,000 Hours
- Power Consumption: 3.7W/ft
- Cutting Interval: 19.5"
- Dimensions: 0.6875" W x 0.3125" H
- IP65 Waterproof rating
- Beam Angle: 120°
- Dimmable
- Bulb Placement: Directional
- Bulb Spacing: 0.44"
- Max Run: 330'
- Output: 12-14 lumens/LED



Directional Bulb Placement



### Accessories included with Each spool:

- (1) 2' Standard Power Cord (pre-installed)
- (1) End Cap (pre-installed)

Item Number	Length	Per Spool
STRP12050-45RB	148'	\$329.99



# STRIP LIGHTS 2 & 4-WIRE 120V SMD LED STRIP LIGHT ACCESSORIES



## POWER CORD KIT

3528/5050, 120 VOLT  
Use to power up to a 330' run of 120V strip lights. Includes power connector and end cap.

**Item Number**      **Each**  
**STRP120\*A-PWR**    **\$5.99**

\*Specify strip light type when ordering:  
35-3528, 50-5050



## POWER CONNECTOR

3528/5050/5050 RGB  
Use to connect 120V strip lights to power cords and accessories.

**Item Number**      **Each**  
**STRP120\*A-CON**    **\$0.18**

\*Specify strip light type when ordering:  
35-3528, 50-5050, 50-RGB-5050 RGB



## MOUNTING CLIP

3528/5050-5050 RGB  
Use to attach 120V strip lights to a solid surface. Requires screws or adhesive; not included.

**Item Number**      **Each**  
**STRP120\*A-CLIP**    **\$0.18**

\*Specify strip light type when ordering:  
35-3528, 50-5050, 50-RGB-5050 RGB



## MOUNTING TRACK

3528/5050-5050 RGB  
Use to attach 120V strip lights to a solid surface. Requires screws or adhesive; not included.

**Item Number**      **Each**  
**STRP120\*A-TRK**    **\$1.89**

\*Specify strip light type when ordering:  
35-3528, 50-5050, 50-RGB-5050 RGB



## END CAP

3528/5050/5050 RGB  
Use to terminate a 120V strip light run. Silicone sealant recommended, sold separately.

**Item Number**      **Each**  
**STRP120\*A-END**    **\$0.18**

\*Specify strip light type when ordering:  
35-3528, 50-5050, 50-RGB-5050 RGB

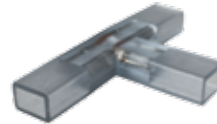


## Y EXTENSION

3528/5050/5050 RGB  
Use to split 1 run of RGB strip light into 2 separate runs. Includes power connectors.

**Item Number**      **Each**  
**STRP120\*A-Y**      **\$9.99**

\*Specify strip light type when ordering:  
35-3528, 50-5050, 50-RGB-5050 RGB



## T CONNECTOR

3528/5050  
Use to connect a perpendicular run of 120V strip light. Includes power connectors.

**Item Number**      **Each**  
**STRP120\*A-T**      **\$2.99**

\*Specify strip light type when ordering:  
35-3528, 50-5050



## L CONNECTOR

3528/5050  
Use for making 90 degree turns. Includes power connectors.

**Item Number**      **Each**  
**STRP120\*A-L**      **\$3.99**

\*Specify strip light type when ordering:  
35-3528, 50-5050



## IN LINE SPLICE

3528/5050  
Use for joining 2 sections of 120V strip lights. Includes power connectors.

**Item Number**      **Each**  
**STRP120\*A-SPL**    **\$1.99**

\*Specify strip light type when ordering:  
35-3528, 50-5050



## RGB IN LINE SPLICE

RGB 5050  
Use for joining 2 sections of RGB 120V strip lights. Includes power connectors.

**Item Number**      **Each**  
**STRP12050A-RGBSPL**    **\$1.99**



## MINI FEMALE TO FEMALE CONNECTOR

3528/5050/5050 RGB  
Useful for small gaps or to turn corners. Includes power connectors. 6.0" Long.

**Item Number**      **Each**  
**STRP120\*A-FFEXTS**      **\$4.99**  
**STRP12050A-RGBFFS**      **\$5.99**

\*Specify strip light type when ordering:  
35-3528, 50-5050



## FEMALE TO FEMALE CONNECTOR

3528/5050/5050 RGB  
Use for joining 2 sections of 120V strip lights. Includes power connectors. 40.0" Long.

**Item Number**      **Each**  
**STRP120\*A-FFEXT**      **\$6.99**  
**STRP12050A-RGBFF**      **\$9.99**

\*Specify strip light type when ordering:  
35-3528, 50-5050



## MULTI-FUNCTION CONTROLLER

3528/5050, 120 VOLT, RF REMOTE CONTROL  
Powers and controls 120V LED strip lights. Dimmer, timer, and 8 dynamic effect settings.

**Item Number**      **Each**  
**URL120-DIM**      **\$59.99**



## RGB MINI INLINE CONTROLLER

RGB 5050, 120 VOLT  
Powers and controls up to 80' of RGB 120V rope lights. 10 Pre-programmed effect settings.

**Item Number**      **Each**  
**STRP12050A-RGBMCNTRL**    **\$29.99**



## RGB REMOTE CONTROLLER

4-WIRE, 120 VOLT, WEATHERPROOF  
RF remote controller. Use up to 151' of RGB LED strip lights. Brightness and effect control.

**Item Number**      **Each**  
**STRP12050A-WPRGBC**      **\$59.99**

# VARIABLE WHITE & ZIG-ZAG 12V SMD LED STRIP LIGHTS **STRIP LIGHTS**

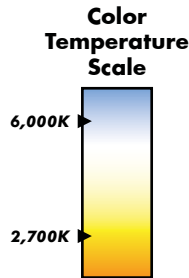
## ALL NEW FOR 2017

This flexible variable color temperature 12V LED strip light is the best solution for getting the perfect white light. Using both cool and warm white LEDs, this strip light's color temperature can be adjusted from 2700K to 6000K with our Variable White Strip Light Controller (sold separately). The LED light strip is available on 16.4 foot spools and can be easily cut every 2" and its peel-and-stick adhesive backing makes installation easy and quick.



### Variable White IP22 SMD 12 Volt LED Strip Lights

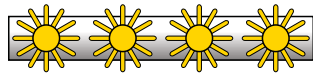
- 12 Volt DC, 12V Power supply required
- 16.4' Spools
- Dimensions: 0.4724" W x 0.1575" H
- 300 LEDs/Spool
- Output: 10 lumens/LED
- Lifetime: 50,000 Hours
- Power Consumption: 1.46W/ft
- Cutting Interval: 2.0"
- IP22 rating
- Dimmable
- Self adhesive backing



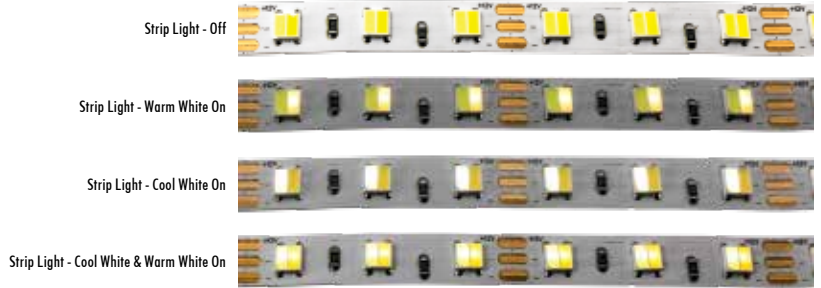
Accessories included with 16.4' spool:

- (1) Female Power Connector (pre-installed)

**Item Number**                      **Per Spool**  
**STRP5050-22VW**                      **\$54.99**



Directional Bulb Placement



### VARIABLE WHITE LED STRIP LIGHT CONTROLLER 12V, RF REMOTE

Adjust the brightness and color temperature of your 12V variable white LED strip lights. On/Off, pre-set brightness buttons, and custom touch color temp and brightness settings.

**Item Number**                      **Each**  
**STRP12A-VWCN**                      **\$24.99**



### ZIG-ZAG IP22 SMD 3528 12 Volt Strip Lights

- 12 Volt DC, 12V Power supply required
- 16.4' Spools
- Dimensions: 0.315 in. W x 0.079 in. H
- 300 LEDs/Spool
- Output: 7-8 lumens/LED
- Lifetime: 50,000 Hours
- Power Consumption: 1.46W/ft
- Cutting Interval: 2.0 inches
- IP22 rating
- Dimmable
- Self adhesive backing



Accessories included with 16.4' spool:

- (1) Female Power Connector (pre-installed)

**Item Number**                      **Color**                      **Per Spool**  
**STRP3528-22Z\***                      **\*SPECIFY**                      **\$49.99**

\*Specify Color when ordering: CW-Cool White, WW-Warm White



Directional Bulb Placement



**PERFECT FOR TURNING CORNERS!**  
Easily turn corners up to 90°  
without using any accessories



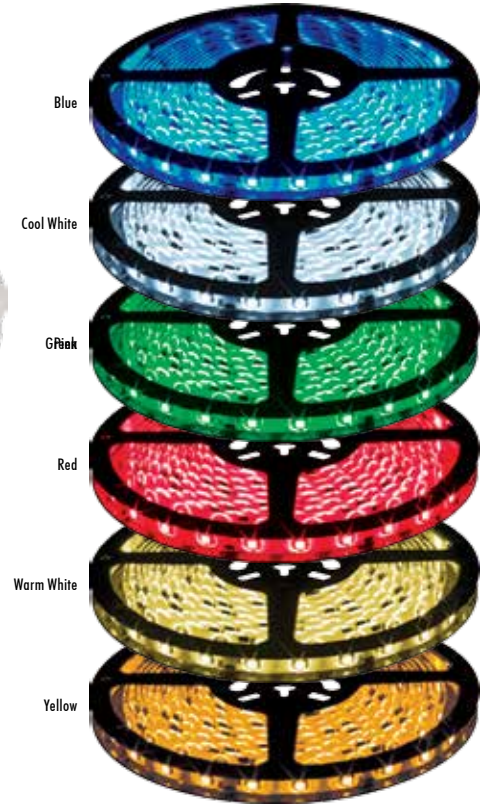
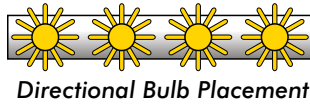
**EASILY FOLLOW CURVES!**  
Perfect for sign lettering,  
curved display cases and bars

# STRIP LIGHTS 3528 & 5050 12V SMD LED STRIP LIGHTS



## IP65 SMD 3528 12 Volt LED Strip Lights

- 12 Volt DC, 12V Power supply required
- 16.4' Spools
- Dimensions: 0.4724" W x 0.1575" H
- 300 LEDs/Spool
- Output: 10 lumens/LED
- Lifetime: 50,000 Hours
- Power Consumption: 1.46W/ft
- Cutting Interval: 2.0"
- IP65 rating
- Dimmable
- Self adhesive backing



Accessories included with 16.4' spool:

- (1) Female Power Connector (pre-installed)

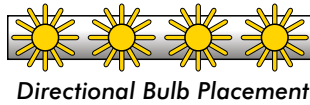
Item Number	Color	Per Spool
STRP3528-65*	*SPECIFY	\$49.99

\*Specify Color when ordering: B-Blue, CW-Cool White, \*G-Green, R-Red, WW-Warm White, Y-Yellow



## IP65 SMD 5050 12 Volt LED Strip Lights

- 12 Volt DC, 12V Power supply required
- 16.4' Spools
- Dimensions: 0.4724" W x 0.1575" H
- 300 LEDs/Spool
- Output: 16 lumens/LED
- Lifetime: 50,000 Hours
- Power Consumption: 4.1W/ft
- Cutting Interval: 4.0"
- IP65 rating
- Dimmable
- Self adhesive backing

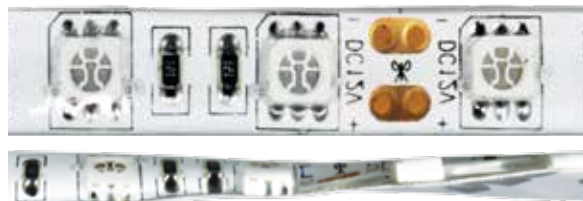


Accessories included with 16.4' spool:

- (1) Female Power Connector (pre-installed)

Item Number	Color	Per Spool
STRP5050-65*	*SPECIFY	\$59.99

\*Specify Color when ordering: B-Blue, CW-Cool White, \*G-Green, R-Red, WW-Warm White, Y-Yellow





# 12V SMD LED STRIP LIGHT ACCESSORIES **STRIP LIGHTS**



## 2A POWER SUPPLY

3528, 12V, 2 AMP  
Use to power LED strip lights.  
Max Run: 3528 - 16.4'

<b>Item Number</b>	<b>Each</b>
STRP12A-24PWR	\$19.99



## 5A POWER SUPPLY

3528, 12V, 5 AMP, WATERPROOF  
Runs over 20' must be wired in parallel.  
Max Run: 3528 - 41'

<b>Item Number</b>	<b>Each</b>
STRP12A-60PWR	\$44.99



## 6A POWER SUPPLY

3528/5050/RGB, 12V, 6 AMP  
Runs over 20' must be wired in parallel.  
Max Run: 3528 - 49', 5050 - 32'

<b>Item Number</b>	<b>Each</b>
STRP12A-72PWR	\$29.99



## 15A POWER SUPPLY

3528/5050, 12V, 15 AMP  
Runs over 20' must be wired in parallel.  
Max Run: 3528 - 123', 5050 - 44'

<b>Item Number</b>	<b>Each</b>
STRP12A-180PWR	\$64.99



## SOLDERLESS SNAP SPLICE

IP22 3528/5050  
Use to join 2 runs of IP22 strip light. Can not be used to connect more than 16' of strip light.

<b>Item Number</b>	<b>Each</b>
STRP12A-22SPL	\$0.99



## SOLDERLESS VAMP SPLICE

IP65 3528/5050  
Use to join 2 runs of IP65 strip light. Can not be used to connect more than 16' of strip light.

<b>Item Number</b>	<b>Each</b>
STRP12A-65SPL	\$0.99



## SOLDERLESS CONNECTOR

IP22 3528/5050  
Simple snap on connector. Use to hard wire your strip light to a power supply, dimmer, etc.

<b>Item Number</b>	<b>Each</b>
STRP12A-22CON	\$2.99



## SOLDERLESS VAMP CONNECTOR

IP65 3528/5050  
Simple snap on connector. Use to hard wire your strip light to a power supply, dimmer, etc.

<b>Item Number</b>	<b>Each</b>
STRP12A-65VCON	\$3.49



## MOUNTING CLIPS

3528/5050 (10/BAG)  
Use to attach strip light to a solid surface. Screws included.

<b>Item Number</b>	<b>Each</b>
SMD-CLIPS	\$4.99



## 2 WAY SPLITTER

3528/5050/RGB  
Use to split power supply connector for multiple runs. Can not connect more than 16' of strip light.

<b>Item Number</b>	<b>Each</b>
STRP12A-2CON	\$4.99



## 3 WAY SPLITTER

3528/5050/RGB  
Use to split power supply connector for multiple runs. Can not connect more than 16' of strip light.

<b>Item Number</b>	<b>Each</b>
STRP12A-3CON	\$5.99



## 4 WAY SPLITTER

3528/5050/RGB  
Use to split power supply connector for multiple runs. Can not connect more than 16' of strip light.

<b>Item Number</b>	<b>Each</b>
STRP12A-4CON	\$6.99



## SOLDERLESS SNAP JUMPER

IP22 3528/5050  
Use to bridge a gap, turn non standard corners, or to join 2 runs of strip light.

<b>Item Number</b>	<b>Each</b>
STRP12A-22JUMP	\$3.49



## SOLDERLESS VAMP JUMPER

IP65 3528/5050  
Use to bridge a gap, turn non standard corners, or to join 2 runs of strip light.

<b>Item Number</b>	<b>Each</b>
STRP12A-65JUMP	\$3.49



## MINI VAMP JUMPER

IP65 3528/5050  
Use to connect 2 runs of strip light or turn corners.

<b>Item Number</b>	<b>Each</b>
STRP12A-5CMJ	\$1.99



## MINI VAMP Y CONNECTOR

IP65 3528/5050  
Use to connect or split 1 run of strip light into 2 runs or as a T connector.

<b>Item Number</b>	<b>Each</b>
STRP12A-5CMY	\$2.49



## 12V DIMMABLE DRIVERS

3528/5050/RGB, 12V, VARIOUS WATTAGES  
Allows the use of LED wall switch dimmers with LED strip lights. 20, 40, 60, and 100 Watt models.

<b>Item Number</b>	<b>Each</b>
STRP12A-*DD	\$79.99-109.99



## 12V INLINE DIMMER

3528/5050, 12V, RF REMOTE  
Adjust the brightness of your 12V strip lights. Also has fading and flashing effects with adjustable speed.

<b>Item Number</b>	<b>Each</b>
STRP12A-DIM	\$19.99



## STANDARD POWER CONNECTOR

3528/5050  
Use to connect strip light to a power supply.  
\*Specify M-Male or F-Female

<b>Item Number</b>	<b>Each</b>
SMD-*PCON	\$2.49



## SOLDERLESS SNAP CONNECTOR

3528/5050  
Simple snap on connector. Use to easily connect strip light to a power supply barrel plug.

<b>Item Number</b>	<b>Each</b>
STRP12A-22PCON	\$3.49

# STRIP LIGHTS RGB 12V SMD LED STRIP LIGHTS

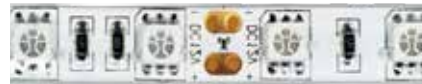
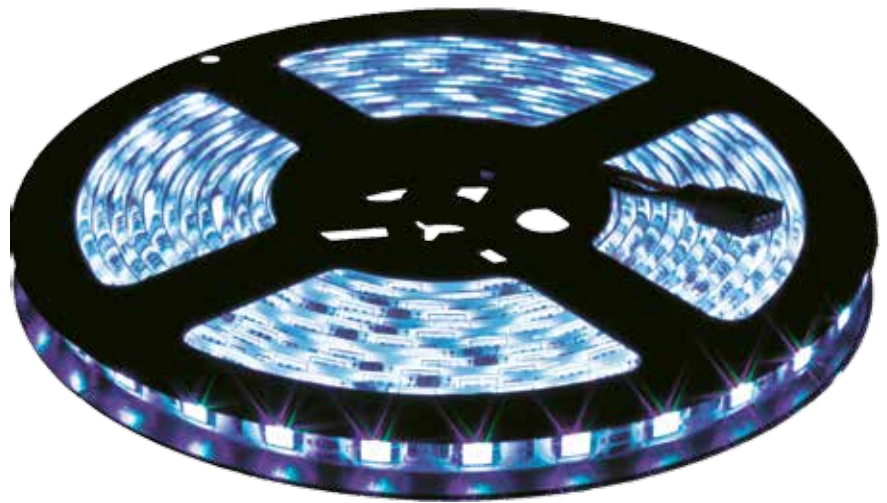


## IP65 SMD-5050 RGB Color Changing 12 Volt LED Strip Light Spool

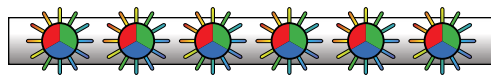
- 12 Volt DC
- (12V Power supply & RGB Controller required)
- 16.4' Spool
- Dimensions: 0.4724" W x 0.1575" H
- 300 LEDs/Spool, Directional Bulb Placement
- Output: 16 lumens/LED
- Lifetime: 50,000 Hours
- Power Consumption: 4.1W/ft
- Cutting Interval: 4.0"
- IP65 Waterproof rating
- Dimmable
- Self adhesive backing

Accessories included with 16.4' spool:

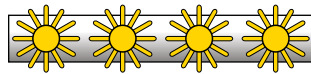
- (1) Female Power Connector (pre-installed)



**Item Number**      **Per Spool**  
**STRP5050-65RGB**      **\$69.99**



Features Tri-Chip Color Changing Technology



Directional Bulb Placement



### RGB MINI INLINE CONTROLLER

RGB, 12V, IR REMOTE  
 Isolate colors, dim colors independently, or select from many different fading/flashing patterns.

**Item Number**      **Each**  
**STRP1250A-RGBM24**      **\$14.99**



### RGB TOUCH CONTROLLER

5050 RGB, 12V, RF REMOTE  
 The controller gives you complete color control and full dimming options. 18 effect modes.

**Item Number**      **Each**  
**RGB-TCNTRL**      **\$29.99**



### RGB 4-PIN POWER CONNECTOR

IP22 5050 RGB  
 Use with 4-pin connectors to hard wire IP22 RGB strip lights

**Item Number**      **Each**  
**STRP1250A-4WCON**      **\$2.99**



### WATERPROOF RGB AMPLIFIER

RGB, 12V, 4 AMPS/CHANNEL  
 Use with 15A power supply to connect multiple runs of RGB strip light to a controller.

**Item Number**      **Each**  
**WP-RGBAMP-3CH-12V**      **\$44.99**



### SOLDERLESS RGB SNAP SPLICE

IP22 5050 RGB  
 Use to join 2 runs of IP22 RGB strip light. Can not be used to connect more than 16' of strip light.

**Item Number**      **Each**  
**STRP12A-22RGSPL**      **\$0.99**



### SOLDERLESS RGB VAMP SPLICE

IP65 5050 RGB  
 Use to join 2 runs of IP65 RGB strip light. Can not be used to connect more than 16' of strip light.

**Item Number**      **Each**  
**STRP12A-65RGSPL**      **\$0.99**



### RGB SOLDERLESS SNAP CONNECTOR

IP22 5050 RGB  
 Simple snap on connector. Use to hard wire your IP22 RGB strip light to accessories.

**Item Number**      **Each**  
**STRP1250A-22RGBPCON**      **\$2.99**



### RGB SOLDERLESS SNAP JUMPER

IP22 5050 RGB  
 Use to bridge a gap, turn non standard corners, or to join 2 runs of IP22 RGB strip light.

**Item Number**      **Each**  
**STRP1250A-22RGBJUMP**      **\$3.49**



### RGB Y CONNECTOR

5050 RGB  
 Use to split power supply connector into 2 runs. Can not connect more than 16' of strip light.

**Item Number**      **Each**  
**STRP1250A-RGBYCON**      **\$2.99**



### RGB 3-WAY SPLITTER

5050 RGB  
 Use to split power supply connector for multiple runs. Can not connect more than 16' of strip light.

**Item Number**      **Each**  
**STRP1250A-RGB3CON**      **\$4.99**



### RGB SOLDERLESS VAMP CONNECTOR

IP65 5050 RGB  
 Simple snap on connector. Use to hard wire your IP65 RGB strip light to accessories.

**Item Number**      **Each**  
**STRP1250A-65RGBVCON**      **\$3.49**



### RGB SOLDERLESS VAMP JUMPER

IP65 5050 RGB  
 Use to bridge a gap, turn non standard corners, or to join 2 runs of IP65 RGB strip light.

**Item Number**      **Each**  
**STRP1250A-65RGBJUMP**      **\$3.49**



### MINI VAMP RGB JUMPER

IP65 5050 RGB  
 Use to connect 2 runs of RGB strip light or turn corners.

**Item Number**      **Each**  
**STRP1250A-RGB5CMJ**      **\$1.99**



### MINI VAMP RGB Y CONNECTOR

IP65 5050 RGB  
 Use to connect or split 1 run of RGB strip light into 2 runs or as a T connector.

**Item Number**      **Each**  
**STRP1250A-RGB5CMY**      **\$2.49**

# RGB 12V SMD LED STRIP LIGHT BUNDLES **STRIP LIGHTS**

**SAVE \$30 WITH OUR BUNDLE DEAL!**



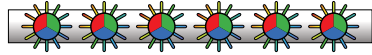
## IP65 SMD-5050 RGB Color Changing 12V LED Strip Light Bundle

Items included with bundle:

- (1) 16.4' RGB Color Changing LED Strip Light Spool
- (1) 12V 6 Amp Power Supply
- (1) 12V RGB LED Strip Light Controller with Remote
- (1) Power Connector (pre-installed)



**Item Number**      **Per Bundle**  
**STRP1250-BDRGBKIT**      **\$89.99**



Features Tri-Chip Color Changing Technology



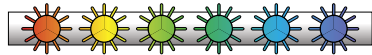
## IP67 SMD 5050 RGB Chasing 12 Volt LED Strip Light Bundle

Items included with bundle:

- (1) 16.4' RGB Chasing LED Strip Light Spool
- (1) 12V 5 Amp Standard Power Supply
- (1) 12V RGB Chasing LED Strip Light Controller with Remote
- (1) Male Power Connector (pre-installed)
- (1) Female Power Connector (pre-installed)



**Item Number**      **Per Bundle**  
**STRP1250-CRGBBN**      **\$119.99**

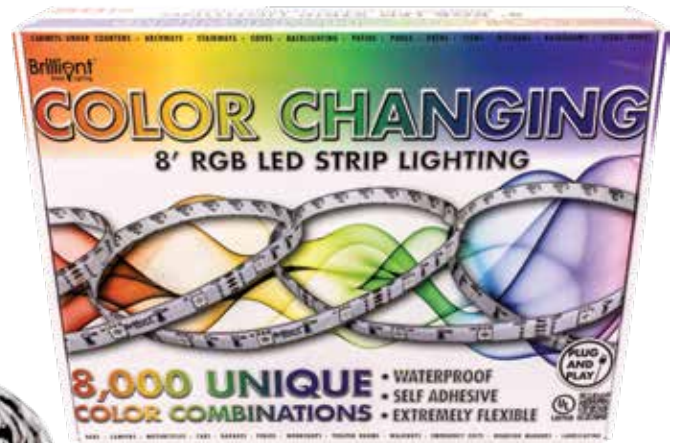


Multiple Chasing Effects



## Plug and Play 8 Foot 12V SMD-5050 RGB 12 Volt LED Strip Light Kit

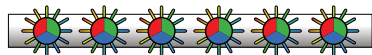
- 12 Volt DC
- Power Consumption: 2.1W/ft
- 8.0' Spool (4 x 2' Sections)
- Lifetime: 30,000 Hours
- Max Run Length: 20.0'
- IP65 Waterproof rating
- Self adhesive backing



Items included with bundle:

- (4) 2.0' RGB Color Changing LED Strip Light Connectable Sections
- (1) 12V Outdoor Rated Power Supply
- (1) 12V RGB LED Strip Light Controller with Remote
- (3) Jumper Connectors
- (6) Heat Shrink Tubing

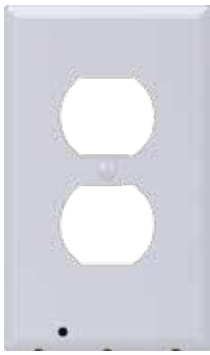
**Item Number**      **Per Kit**  
**STRP1250-RGBKIT**      **\$39.99**



Features Tri-Chip Color Changing Technology



# LED FIXTURES LED OUTLET COVERS, PUCK LIGHTS & RIGID BARS



SNAP  
BRAND LIGHTING

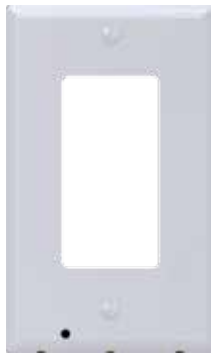
### LED Duplex Guidelight

LED DOWNLIGHT OUTLET COVER

Easy-to-install and energy-efficient design safely transforms your outlet coverplate into a convenient night light. It requires no wires or batteries and leaves all outlets free for use! Light sensor allows for auto on/off.

**Item Number**      **Each**  
**SP-DECGLW**      **\$14.99**

\*Not compatible with GFCI outlets



SNAP  
BRAND LIGHTING

### LED Decor Guidelight

LED DOWNLIGHT OUTLET COVER

Easy-to-install and energy-efficient design safely transforms your outlet coverplate into a convenient night light. It requires no wires or batteries and leaves all outlets free for use! Light sensor allows for auto on/off.

**Item Number**      **Each**  
**SP-DUPGLW**      **\$14.99**

\*Not compatible with GFCI outlets



SNAP  
BRAND LIGHTING

### LED Toggle Switchlight

LED DOWNLIGHT SWITCH COVER

Easy-to-install and energy-efficient design safely transforms your light switch into a night-light. It requires no wires or batteries and lasts 25+ years! Switch not included. Adjust LED brightness with 4 settings: High, Low, Off and Automatic.

**Item Number**      **Each**  
**SP-TOGSLW**      **\$16.99**

\*Not compatible with 3 way switches



SNAP  
BRAND LIGHTING

### LED Decor Switchlight

LED DOWNLIGHT SWITCH COVER

Easy-to-install and energy-efficient design safely transforms your light switch into a night-light. It requires no wires or batteries and lasts 25+ years! Switch not included. Adjust LED brightness with 4 settings: High, Low, Off and Automatic.

**Item Number**      **Each**  
**SP-DECSLW**      **\$16.99**

\*Not compatible with 3 way switches

Brilliant  
Brand Lighting

### 9W LED Puck Light Kit

- 12 Volt DC, 12V Power supply included
- Wattage: 9.0W/Puck, 3 x 3.0W LEDs
- Dimensions: 2.75" Dia. x 0.5625" D
- Housing: Aluminum
- Lifetime: 50,000 Hours
- Beam Angle: 120°
- Lumen Output: 640lm
- Color Temp: 6,000K
- Certifications: ETL Listed



12 VOLT

**Item Number**      **Per Kit**  
**UCLP-9CW**      **\$69.99**



Accessories included with each kit:

- (1) 12V Power Supply
- (2) Daisy Chain Extensions
- (6) LED Puck Light Mounting Screws
- (4) Mounting Clips with Screws

Brilliant  
Brand Lighting

### 4.5W LED Puck Light Kit

- 12 Volt DC, 12V Power supply included
- Wattage: 4.5W/Puck, 3 x 1.5W LEDs
- Dimensions: 3.0" Dia. x 0.875" D
- Housing: White Plastic
- Lifetime: 50,000 Hours
- Beam Angle: 45°
- Lumen Output: 280lm
- Color Temp: CW-6,000K, WW-3,000K
- Certifications: ETL Listed



12 VOLT

**Item Number**      **Color**      **Per Kit**  
**UCLP-4\***      **\*SPECIFY**      **\$49.99**

\*Specify Color when ordering:  
CW-Cool White, WW-Warm White



Accessories included with each kit:

- (1) 12V Power Supply
- (2) Daisy Chain Extensions
- (6) LED Puck Light Mounting Screws
- (4) Mounting Clips with Screws

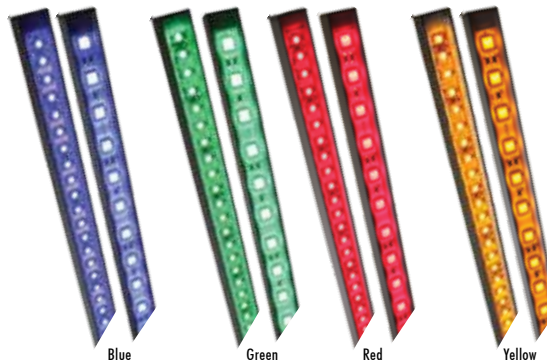
Brilliant  
Brand Lighting

### 3528 & 5050 SMD LED 12 Volt Rigid Light Bars

- 12 Volt DC, 12V Power supply required
- Dimensions: 19.6" L x 0.6" W x 0.35" H
- 3528: 60 LEDs/Bar, 5050: 30 LEDs/Bar
- Output: 3528: 4-5 lm/LED, 5050: 10-12 lm/LED
- Lifetime: 50,000 Hours
- Power Consumption: 3528: 7.8W/Bar, 5050: 12.0W/Bar
- IP68 Waterproof rating
- Dimmable
- Aluminum construction



12 VOLT



Blue

Green

Red

Yellow

**Item Number**      **Color**      **Per Bar**  
**RIGID-SMD3528-\***      **\*SPECIFY**      **\$19.99**  
**RIGID-SMD5050-\***      **\*SPECIFY**      **\$27.99**

\*Specify Color when ordering: B-Blue, G-Green, R-Red, Y-Yellow



**12V POWER SUPPLY 100W**  
100 WATT, 8 AMP, WATERPROOF  
Powers up to 11-3528 Rigid Bars, or  
7-5050 Rigid Bars. Indoor/Outdoor rated

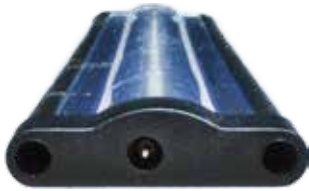
**Item Number**      **Each**  
**RIGID-PWRSUP-8A**      **\$59.99**



**POWER CONNECTOR**  
12 VOLT, 3528/5050/5630  
Use to link 3528, 5050 & 5630 rigid light  
bars or to connect to a power supply.

**Item Number**      **Each**  
**RIGID-PCON-\***      **\$1.99**

\*Specify M-Male, or F-Female



Cool White      Natural White      Warm White



## Flush Mount LED Under Cabinet Light Bar

- Ultra thin low profile under cabinet design
- 24 Volt DC, 24V Power supply required
- Dimensions: 1.3" W x 0.3" H
- Sizes: 11.8"/LCL-300, 23.6"/LCL-600, or 35.4"/LCL-900
- LED Count: 42/LCL-300, 84/LCL-600, 132/LCL-900
- Lumen Output: 200/LCL-300, 420/LCL-600, 630/LCL-900
- Color Temp: CW-6,000K, NW-5,000K, WW-3,800K
- Lifetime: 50,000 Hours
- Power Consumption:
- 3.0W/LCL-300, 6.0W/LCL-600, 9.0W/LCL-900
- Dimmable

Accessories included with Each Ruler:

- (2) Flush Mount Metal Clips
- (4) Mounting Screws
- (1) Male-to-Male Extension
- (1) End-to-End Connector



Brilliant  
Hand Lighting



24 VOLT

Item Number	Length	Color	Per Bar
LCL-300-*	11.8 in.	*SPECIFY	\$19.99
LCL-600-*	23.6 in.	*SPECIFY	\$39.99

\*Specify Color when ordering:  
CW-Cool White, NW-Natural White, WW-Warm White

## LED UNDER CABINET LIGHT BAR ACCESSORIES



### 6W 24V POWER SUPPLY

24 VOLT, INDOOR USE ONLY  
Powers 2/LCL-300, LCL-T300,  
1/LCL-T500, or 1/LCL-600.

Item Number	Each
LCL-6W-PWR	\$9.99



### 12W 24V POWER SUPPLY

24 VOLT, INDOOR USE ONLY  
Powers 4/LCL-300, LCL-T300, 2/LCL-T500,  
2/LCL-600, or 1/LCL-900.

Item Number	Each
LCL-12W-PWR	\$12.99



### 24W 24V POWER SUPPLY

24 VOLT, INDOOR USE ONLY  
Powers 8/LCL300, LCL-T300, 4/LCL-T500,  
4/LCL-600, or 2/LCL-900.

Item Number	Each
LCL-24W-PWR	\$16.99



### LED TOUCH DIMMER

24 VOLT, INDOOR USE ONLY  
Use to dim all LED ruler lights with  
touch interface.

Item Number	Each
LCL-TDIM	\$19.99



Cool White      Natural White      Warm White

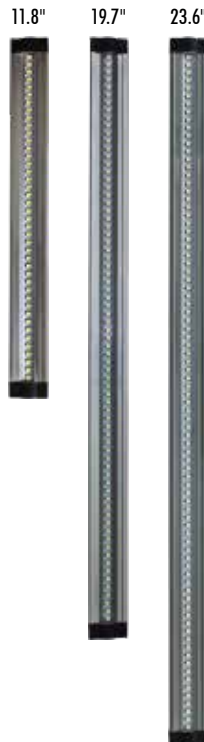


## Corner Mount LED Under Cabinet Light Bar

- Corner mount under cabinet design
- 24 Volt DC, 24V Power supply required
- Dimensions: 1.3" W x 0.5" H
- Sizes: 11.8"/LCL-T300, 19.7"/LCL-T500
- LED Count: 42/LCL-T300, 72/LCL-T500
- Lumen Output: 200/LCL-T300, 350/LCL-T500
- Color Temp: CW-6,000K, NW-5,000K, WW-3,800K
- Lifetime: 50,000 Hours
- Power Consumption: 3.0W/LCL-T300, 5.0W/LCL-T500
- Dimmable

Accessories included with Each Ruler:

- (2) Corner Mount Metal Clips
- (2) Flush Mount Metal Clips
- (8) Mounting Screws
- (1) Male-to-Male Extension
- (1) End-to-End Connector



Brilliant  
Hand Lighting



24 VOLT

Item Number	Length	Color	Per Bar
LCL-T300-*	11.8 in.	*SPECIFY	\$19.99
LCL-T500-*	19.7 in.	*SPECIFY	\$29.99
LCL-T600-*	23.6 in.	*CW or WW	\$39.99

\*Specify Color when ordering:  
CW-Cool White, NW-Natural White, WW-Warm White

# LED RETROFIT LIGHTS 120V LED HIGH-OUTPUT BULB & PANEL LIGHTS

## LED RETROFIT BULBS

LED bulbs consume less energy, reduce light pollution, enhance night vision, and emit no ultraviolet light, do not attract insects, contain no mercury or lead and they save you money. With approximately 40,000 hours of lamp light usage, these LED street lamp replacement bulbs are the best choice to replace High Intensity Discharge (HID) or High Pressure Sodium (HPS) lights because of their long life, lack of hazardous materials and energy savings. Applications include: primary & secondary roads, bridges, squares, parks, factories, residential areas and more.

### 14W-120W LED Retrofit Bulb



- 85-265 Volt AC
- Power Consumption: 14W - 120W
- Lumen Output: 1,680 - 14,400
- LED Count: 42 - 336
- Color Temp:
- 2,700-3,300K/Warm White
- 4,000-4,500K/Pure White
- 5,000-5,500K/Cool White
- Color Rendering Index (CRI):  $\geq 80$
- Beam Angle: 360°
- Lifetime: 40,000 Hours
- IP65 Waterproof rating
- Base Type: E26/E27/E39/E40
- 5 Year Warranty, UL Listed



**CALL FOR BULK PRICING AND LEAD TIME**

Item Number	Color	Each
E40-*	*SPECIFY	\$39.99 - \$179.99

\*Specify Color when ordering: CW-Cool White, PW-Pure White, WW-Warm White

## RECESSED, SUSPENDED OR DROP-IN CEILING LED PANEL FIXTURES

Replace your standard fluorescent troffers, ceiling lights, recessed or suspended fixtures and save 60% on energy costs! These LED Panels produce are extremely bright and feature side lit SMD LED technology, which produces an even light throughout the panel. These super slim panel LED Panel Lights fit perfectly in ceilings, hanging applications or most other architectural lighting design projects.



### LED Rectangle Panel

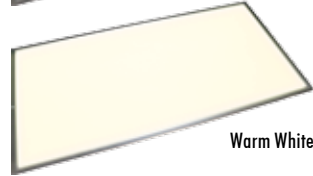
- 120 Volt AC Power/24 Volt Panel
- Instant start, no flickering, no humming
- Recessed or suspended models available
- LED Count: 704
- Lumen Output: 5,600/CW, 5,500/DW, 5,400/WW
- Color Temp:
- 6,000-6,500K/Cool White
- 4,000-4,500K/Daylight White
- 2,900-3,100K/Warm White
- Beam Angle: 120°
- Lifetime: 50,000 Hours
- Power Consumption: 72 Watts
- Side lit for even light distribution
- Durable aluminum frame
- Shock and vibration resistant
- Dimensions: 23.6" x 47.2" x 0.5"
- Dimmable models available
- 3 Year warranty, UL listed



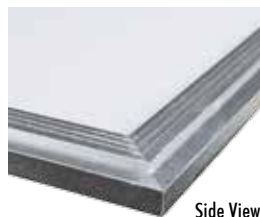
Cool White



Daylight White



Warm White



Side View

Item Number	Color	Each
PAN-6001200-*	*SPECIFY	\$89.99
PAN-6001200-*D	*SPECIFY	\$99.99

\*Specify Color when ordering:  
CW-Cool White, DW-Daylight White, WW-Warm White  
D-Dimmable Model



### 6" LED Round Panel

- Input: 120 Volt AC
- Output: 24-42 Volt DC
- Power Consumption: 12 Watts
- Lumen Output: 880lm
- Color Temp:
- 6,000-6,500K/Cool White
- 3,000-3,500K/Warm White
- Beam Angle: 180°
- Lifetime: 50,000 Hours
- Acrylic faceplate with aluminum shell
- Dimensions: 6.75" dia., 1.2" H
- Non Dimmable



Included with Round Panel Light:

- (1) 6" Round LED Panel Light
- (1) Low Voltage LED Driver
- (2) Recessed/Can Mounting Clips

Item Number	Color	Each
DL6-12W-*	*SPECIFY	\$24.99

\*Specify Color when ordering:  
CW-Cool White or WW-Warm White

## LED T8 REPLACEMENT TUBE LIGHTS

Say goodbye to the hassle of maintaining fluorescent T8 fixtures and enjoy a 55%+ savings on electricity consumed by replacing your existing fluorescent bulbs with new energy efficient and maintenance free LED T8 bulbs. LED T8 tube lights can be installed with ease into existing sockets by removing or bypassing the existing ballast and, since they use no ballast, are virtually maintenance free. LED T8 bulbs have up to a 94,000 hour working life and they include a two to five year manufacturer's warranty. A premium aluminum circuit board enclosed in a clear PVC tube and an extruded aluminum back heat sink, combined with SMD LEDs give LED T8 replacements the durability and quality that our customers have come to expect from our products.



### 4' Economy LED T8

- Input: 120 Volt AC
- Power Consumption: 18.0 Watts
- Lumen Output: 1,800
- Color Temp:  
CW-6,000K, DW-5,000K, NW-4,000K, WW-3,000K
- Beam Angle: 120°
- Lifetime: 50,000 Hours
- Dimensions: 1.25" H x 1.125" W (oval)
- 2 Year warranty
- Easily install into existing T8 fixtures
- Not compatible with ballasts
- 55%+ Savings on energy consumption
- Integrated LED heat sink and housing design
- G13 Double pin base
- Listings: CE, RoHS - contains no mercury or lead

Item Number	Color	Each
T8-18ECO*	*SPECIFY	\$9.99

\*Specify Color when ordering:  
CW-Cool White, DW-Daylight White, NW-Natural White, WW-Warm White



### 4' DLC LED T8

- Input: 80-277 Volt AC
- Power Consumption: 18.0 Watts
- Lumen Output: 2,000
- Color Temp: WW-3,000-3,500K, NW-5,000-5,500K
- Beam Angle: 120°
- Lifetime: 50,000 Hours
- Dimensions: 1.0" diameter
- LED Count: 336
- Color Accuracy: CRI-80
- 3 Year warranty
- Easily install into existing T8 fixtures
- Rotating end caps for directional positioning
- Listings: DLC, FCC, UL, RoHS

Item Number	Color	Each
T8-18WUL*	*SPECIFY	\$11.99

\*Specify Color when ordering:  
NW-Natural White, WW-Warm White



CALL FOR BULK PRICING AND LEAD TIME



### 4' DLC LED T8

- Input: 120 Volt AC
- Power Consumption: 18.0 Watts
- Lumen Output: 1,800
- Color Temp:  
DW-5,000K, NW-4,000K, WW-3,000K
- Beam Angle: 120°
- Lifetime: 50,000 Hours
- Dimensions: 1.25" H x 1.125" W (oval)
- 5 Year warranty
- Easily install into existing T8 fixtures
- Plug & Play - compatible with ballasts
- 55%+ Savings on energy consumption
- Integrated LED heat sink and housing design
- G13 Double pin base
- Listings: DLC, FCC, UL, RoHS

Item Number	Color	Each
T8-18DLC*	*SPECIFY	\$14.99

\*Specify Color when ordering:  
DW-Daylight White, NW-Natural White, WW-Warm White



### 4' HYBRID LED T8

- Input: 110-277 Volt AC
- Power Consumption: 16.0 Watts
- Lumen Output: 1,600
- Color Temp: DW-5,000K, NW-4,000K
- Beam Angle: 120°
- Lifetime: 94,000 Hours
- Dimensions: 1.5" H x 1.25" W (oval)
- Operating Temp: -4°F - 122°F
- Color Accuracy: CRI-85
- 5 Year warranty
- Easily install into existing T8 fixtures
- Plug & Play - compatible with ballasts
- Listings: DLC, FCC, UL, RoHS

Item Number	Color	Each
T8-DLC16W*	*SPECIFY	\$19.99

\*Specify Color when ordering:  
5K-Daylight White, 4K-Natural White



# LED RETROFIT LIGHTS 120V SPECIALTY LED T8 BULBS



## 2' & 3' BYPASS ONLY LED T8

- Input: 120 Volt AC
- Power Consumption: 2'-9.0, 3"-12.0 Watts
- Lumen Output: 2'-1,150, 3'-1,450
- Color Temp:  
CW-5,000K, NW-4,000K, WW-3,000K
- Beam Angle: 230°
- Lifetime: 50,000 Hours
- Dimensions: 2' or 3' lengths - 1" tube dia.
- 5 Year warranty
- Easily install into existing T8 fixtures
- Not compatible with ballasts
- 55%+ Savings on energy consumption
- G13 Bi-pin base
- Listings: UL, NSF, RoHS - contains no mercury or lead

Item Number	Length	Color	Each
T8-GEL29NB*	2'	*SPECIFY	\$11.99
T8-GEL311NB*	3'	*SPECIFY	\$12.99

\*Specify Color when ordering:  
CW-Cool White, NW-Natural White, WW-Warm White



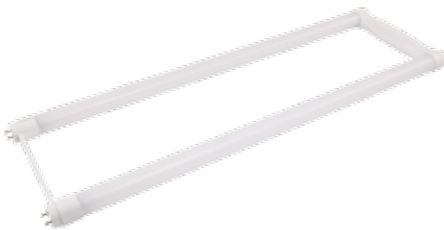
## 2' & 3' BALLAST ONLY LED T8

- Input: 120 Volt AC
- Power Consumption: 2'-9.0, 3"-12.0 Watts
- Lumen Output: 2'-1,150, 3'-1,450
- Color Temp:  
CW-5,000K, NW-4,000K, WW-3,000K
- Beam Angle: 230°
- Lifetime: 50,000 Hours
- Dimensions: 2' or 3' lengths - 1" tube dia.
- 5 Year warranty
- Easily install into existing T8 fixtures
- Plug & Play - with electronic ballasts only
- 55%+ Savings on energy consumption
- G13 Bi-pin base
- Listings: UL, NSF, RoHS - contains no mercury or lead

Item Number	Length	Color	Each
T8-GEL29B*	2'	*SPECIFY	\$11.99
T8-GEL311B*	3'	*SPECIFY	\$12.99

\*Specify Color when ordering:  
CW-Cool White, NW-Natural White, WW-Warm White

CALL FOR BULK PRICING AND LEAD TIME



## 2' U-BEND LED T8

- Input: 120 Volt AC
- Power Consumption: 12.0/17.0 Watts
- Lumen Output: 12.0W-1,800, 17.0W-2,200
- Color Temp:  
CW-5,000K, NW-4,000K, WW-3,000K
- Beam Angle: 230°
- Lifetime: 50,000 Hours
- Dimensions: 22.6" L x 7.0" W - 1" tube dia.
- 5 Year warranty
- Easily install into existing T8 fixtures
- Plug & Play - compatible with ballasts
- 55%+ Savings on energy consumption
- G12 Bi-pin base
- Listings: UL, NSF, RoHS - contains no mercury or lead

Item Number	Wattage	Color	Each
T8-GELU12*	12W	*SPECIFY	\$19.99
T8-GELU17*	17W	*SPECIFY	\$21.99

\*Specify Color when ordering:  
CW-Cool White, NW-Natural White, WW-Warm White



## 8' DLC LED T8

- Input: 120 Volt AC
- Power Consumption: 36.0 Watts
- Lumen Output: 3,900
- Color Temp:  
CW-6,000K, NW-4,000K, WW-3,000K
- Beam Angle: 120°
- Lifetime: 50,000 Hours
- Dimensions: 8' length - 1" tube dia.
- FA8 Single pin base
- 5 Year warranty
- Easily install into existing T8 fixtures
- Plug & Play - compatible with ballasts
- Listings: DLC, FCC, UL, RoHS

Item Number	Color	Each
T8-836*	*SPECIFY	\$39.99

\*Specify Color when ordering:  
CW-Cool White, NW-Natural White, WW-Warm White







## LED Troffer Lights

PRODUCTIVITY SERIES

Dimensions: 2' x 2' / 2' x 4'

Input Voltage: 100-277V

Input Wattage: 30W/50W

Replacement Wattage: 50W/80W

Lumen Output: 4,725/6,750

Color Temperature: 3,000-5,00K

CRI: >70

Beam Angle: N/A

Temperature Rating: -30°F - 120°F

IP Rating: IP44

Dimmable: YES

Materials:

Lifetime: 100,000 Hours

Ratings: DLC/CE/FCC/UL

Warranty: 5 Years

Item Number	Each
COM-TR2X2/4	\$99.99/\$129.99



## 4' LED Vapor Tight Strip Fixture

2 OR 3 LAMP OPTIONS

Dimensions: 50" W x 5.8" - 8.6" H x 4.2" D

Input Voltage: 100-277V

Input Wattage: 40W/60W

Replacement Wattage: 114W/216W

Lumen Output: 4,600/6,900

Color Temperature: 3,000-5,700K

CRI: >83

Beam Angle: 220°

Temperature Rating: -30°F - 120°F

IP Rating: IP67

Dimmable: YES

Materials: Acrylic Lens/Aluminum + Acrylic Body

Lifetime: 100,000 Hours

Ratings: DLC/UL

Warranty: 5 Years

Item Number	Each
COM-4VTL40/60	\$119.99/\$139.99



## LED Area Light

PHILLIPS LEDS

Dimensions: 13" W x 3.9" H x 9.1" D

Input Voltage: 100-277V

Input Wattage: 35W/50W/80W/100W/120W/150W

Replacement Wattage: 175W/250W/375W/500W/600W/750W

Lumen Output: 4,800/7,000/11,000/12,212/15,700/19,500

Color Temperature: 3,000-5,700K

CRI: >80

Beam Angle: 220°

Temperature Rating: -30°F - 130°F

IP Rating: IP65

Dimmable: YES

Materials: PC Lens/Aluminum Body

Lifetime: 100,000 Hours

Ratings: DLC/CE/FCC/UL

Warranty: 10 Years

Item Number	Each
COM-ALA*	\$219.99 - \$379.99



## LED High Bay Light

INDUSTRIAL RATED

Dimensions: 9.1"/10.3"/12.2" H - 14.2" Diameter

Input Voltage: 100-277V

Input Wattage: 100W/150W/240W

Replacement Wattage: 400W/600W/1,000W

Lumen Output: 11,800/17,500/25,000

Color Temperature: 3,000-5,700K

CRI: >70

Beam Angle: 100°/60°/20°

Temperature Rating: -30°F - 130°F

IP Rating: IP44

Dimmable: YES

Materials: Aluminum Reflector/Aluminum Body

Lifetime: 100,000 Hours

Ratings: DLC/CE/FCC/UL

Warranty: 5 Years

Item Number	Each
COM-HBI*	\$189.99 - \$269.99



## LED High Bay Light

RETAIL RATED

Dimensions: 9.1"/10.3"/12.2" H - 14.2" Diameter

Input Voltage: 100-277V

Input Wattage: 100W/150W/240W

Replacement Wattage: 400W/600W/1,000W

Lumen Output: 11,800/17,500/25,000

Color Temperature: 3,000-5,700K

CRI: >70

Beam Angle: 100°/60°/20°

Temperature Rating: -30°F - 130°F

IP Rating: IP44

Dimmable: YES

Materials: Acrylic Reflector/Aluminum Body

Lifetime: 100,000 Hours

Ratings: DLC/CE/FCC/UL

Warranty: 5 Years

Item Number	Each
COM-HBR*	\$219.99 - \$299.99



## LED High Bay UFO Light

WATERPROOF RATED

Dimensions: 6.7"/7.5" H - 13.2/16.9" Diameter

Input Voltage: 100-277V

Input Wattage: 100W/150W/240W

Replacement Wattage: 400W/600W/1,000W

Lumen Output: 13,300/19,500/30,650

Color Temperature: 3,000-5,700K

CRI: >83

Beam Angle: 120°

Temperature Rating: -30°F - 150°F

IP Rating: IP67

Dimmable: YES

Materials: Aluminum Body

Lifetime: 100,000 Hours

Ratings: DLC/CE/FCC/UL

Warranty: 10 Years

Item Number	Each
COM-HBUFO*	\$259.99 - \$329.99



## LED Flood Lights

PHILLIPS LEDS

Dimensions: 13" W x 3.9" H x 9.1" D

Input Voltage: 100-277V

Input Wattage: 40W/60W/90W/120W/150W

Replacement Wattage: 150W/200W/320W/480W/600W

Lumen Output: 4,800/7,200/10,800/14,400/18,000

Color Temperature: 3,000-5,700K

CRI: >70

Beam Angle: 120°

Temperature Rating: -30°F - 130°F

IP Rating: IP65

Dimmable: 150W ONLY

Materials: Glass Lens/Aluminum Body

Lifetime: 100,000 Hours

Ratings: DLC/CE/FCC/UL

Warranty: 5 Years

Item Number	Each
COM-FLI*	\$99.99 - \$279.99



## LED Low Bay Canopy Lights

SLIM SERIES

Dimensions: 9.5" W x 2.5" H x 9.5" D

Input Voltage: 100-277V/277-480V

Input Wattage: 28W/40W/60W/90W

Replacement Wattage: 100W/150W/200W/250W

Lumen Output: 2,800/4,000/6,000/9,000

Color Temperature: 3,500-5,700K

CRI: >80

Beam Angle: 120°

Temperature Rating: -30°F - 120°F

IP Rating: IP67

Dimmable: YES, built in

Materials: Ballistic PC Lens/Aluminum Body

Lifetime: 100,000 Hours

Ratings: DLC/UL

Warranty: 5 Years

Item Number	Each
COM-LBCS*	\$119.99 - \$189.99



## LED Wall Pack

WITH PHOTOCELL SENSOR

Dimensions: 15.7" W x 9.1" H x 7.4" D

Input Voltage: 100-277V

Input Wattage: 28W/40W/60W/90W

Replacement Wattage: 100W/200W/300W/500W

Lumen Output: 2,660/3,721/ 5,300/8,614

Color Temperature: 3,000-5,700K

CRI: >70

Beam Angle: 120°

Temperature Rating: -30°F - 130°F

IP Rating: IP65

Dimmable: NO

Materials: Glass Lens/Aluminum Body

Lifetime: 100,000 Hours

Ratings: DLC/CE/FCC/UL

Warranty: 10 Years

Item Number	Each
COM-WPD*	\$99.99 - \$159.99



## LED Shoebox Lights

PHILLIPS LEDS

Dimensions: 14.2" W x 3.9" H x 22.0" D

Input Voltage: 100-277V

Input Wattage: 150W/200W/300W

Replacement Wattage: 750W/1,000W/1,500W

Lumen Output: 20,000/31,000/40,500

Color Temperature: 3,000-5,700K

CRI: >70

Beam Angle: 120°

Temperature Rating: -30°F - 130°F

IP Rating: IP65

Dimmable: YES

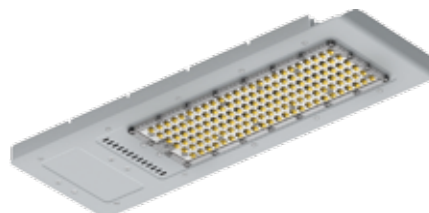
Materials: PC Lens/Aluminum Body

Lifetime: 100,000 Hours

Ratings: DLC/CE/FCC/UL

Warranty: 10 Years

Item Number	Each
COM-SBA*	\$499.99 - \$599.99



## LED Roadway Lights

MUNICIPAL SERIES

Dimensions: 3.32-3.54" W x 5.31-6.3" H x 14.4-24.87" D

Input Voltage: 100-277V/277-480V

Input Wattage: 30W/60W/90W/120W/150W

Replacement Wattage: 120W/240W/350W/500W/600W

Lumen Output: 3,300/6,600/9,900/13,200/16,500

Color Temperature: 3,500-5,700K

CRI: >80

Beam Angle: 120°

Temperature Rating: -30°F - 120°F

IP Rating: IP65

Dimmable: OPTIONAL

Materials: Ballistic PC Lens/Brushed Aluminum Body

Lifetime: 100,000 Hours

Ratings: DLC/UL

Warranty: 5 Years

Item Number	Each
COM-SLM*	\$119.99 - \$299.99

# LED PARTY LIGHTS PARTY & SEASONAL LIGHTS



## LED PIXIE BERRY SETS

WATERPROOF (12/PACK)  
 Dimensions: 0.79" diameter  
 Battery Life: 36 hours  
 Power Consumption: 0.06W  
 Effect: Slow fading  
 Waterproof  
 Indoor/Outdoor use

<b>Item Number</b>	<b>COLOR</b>	<b>Each</b>
<b>LNLPB-12*</b>	<b>*SPECIFY</b>	<b>\$19.99</b>

\*Specify Color when ordering:  
 A-Amber, B-Blue, G-Green, LG-Lime Green, O-Orange,  
 Pi-Pink, Pu-Purple, R-Red, T-Teal, WW-Warm White



## RGB LED COLOR CHANGING VASE LIGHT

COLOR CHANGING, MULTIPLE EFFECTS  
 Choose from 16 colors and 4 effects.  
 Dimensions: 6.0" diameter with 18 LEDs  
 Includes AC adapter and remote control  
 Battery power optional-requires 3 AA batteries. Indoor use only

<b>Item Number</b>	<b>Each</b>
<b>LNLVL-6RGB</b>	<b>\$39.99</b>



## LED MINI LIGHTS

CLEAR CASE, CLEAR WIRE  
 Requires 3 AA batteries (not included)  
 LED Count: 18  
 Length: 9.0', includes 3.0' lead  
 On/Off switch, blink or steady burn effect  
 Indoor use only

<b>Item Number</b>	<b>COLOR</b>	<b>Each</b>
<b>102LEDBL-*</b>	<b>*SPECIFY</b>	<b>\$12.99</b>

\*Specify Color when ordering:  
 CW-Cool White, WW-Warm White



## LED MULTI COLOR LIGHTS

BLACK CASE, BLACK WIRE  
 Requires 3 AA batteries (not included)  
 LED Count: 20  
 Length: 6.33', includes 1.0' lead  
 On/Off switch  
 Multi Color bulbs: red, green, blue, yellow

<b>Item Number</b>	<b>Each</b>
<b>102LEDBL-BM</b>	<b>\$9.99</b>

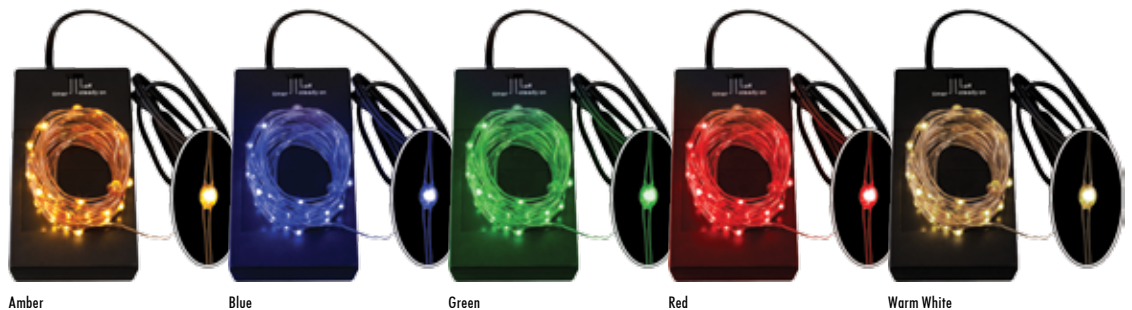


## LED MICRO LIGHTS

BLACK CASE, CLEAR WIRE  
 Requires 3 AA batteries (not included)  
 LED Count: 36 with 4" spacing  
 Length: 12.0' lighted length with 20" lead  
 3 Position switch: ON/OFF/Timer  
 Timer shuts off automatically after 8 hours

<b>Item Number</b>	<b>COLOR</b>	<b>Each</b>
<b>102LEDBLT-*</b>	<b>*SPECIFY</b>	<b>\$18.99</b>

\*Specify Color when ordering:  
 A-Amber, B-Blue, G-Green, R-Red, WW-Warm White



# PARTY & SEASONAL LIGHTS CHILI PEPPER & LED STRING LIGHTS



## CHILI PEPPER WREATH

GREEN, RED & YELLOW

120 Volt AC

Dimensions: 16.0" W x 16.0" H

96 Pepper lights

Stacking plug

<b>Item Number</b>	<b>Each</b>
<b>10235PLW</b>	<b>\$29.99</b>



## CHILI PEPPER CLUSTERS

INDOOR/OUTDOOR

120 Volt AC

Bulb Count: 35, bulb length: 16"

Length: 4.0'

Stackable male plug

<b>Item Number</b>	<b>Each</b>
<b>10235PL2-*</b>	<b>\$19.99</b>

\*Specify Color when ordering: G-Green, M-Multi, R-Red, Y-Yellow



## CHILI PEPPER STRING SETS

INDOOR/OUTDOOR

120 Volt AC

Bulb Count: 35 with 5" spacing

Length: 14.5'

Stackable end-to-end plug

<b>Item Number</b>	<b>Each</b>
<b>10235PL1-*</b>	<b>\$17.99</b>

\*Specify Color when ordering: G-Green, R-Red



## C7 FLICKER BULB

INDOOR/OUTDOOR

Clear flicker flame bulbs

C7/E12 Base bulb, 2 bulbs per pack

120 Volt, 2 Watts per bulb

300 Hour Lifetime

<b>Item Number</b>	<b>Each</b>
<b>102FLCA10</b>	<b>\$3.49</b>



## C7 500' BLACK STRING LIGHT SPOOL

SOCKETS AND WIRE WITHOUT BULBS

SPT2 insulated wire - 10 Amp rating

Base Size: C7-E12 Candelabra Base

Socket Spacing: 12"

Male quick connect not included

<b>Item Number</b>	<b>Each</b>
<b>100SL5C712B</b>	<b>\$149.99</b>



## CHILI PEPPER BULBS

3 BULBS/PACK, INDOOR/OUTDOOR

LED Count: 3 Super Bright LEDs per Bulb

Base: E17 Intermediate (use with any C9 socket)

Input: 120 Volt AC, 0.37 Watts/0.02 Amps

Durable high impact plastic with nickel base

<b>Item Number</b>	<b>Each</b>
<b>C9L-CP3P*</b>	<b>\$8.99</b>

\*Specify Color when ordering: G-Green, R-Red

## LED STRING LIGHT SETS - Multiple color options call or visit Birddog Distributing for more info!



### STANDARD M5 SETS

COMMERCIAL GRADE, UL LISTED

120 Volt AC

LED Count: 70 with 4" spacing

Length: 23.5'

Power Consumption: 4.8W, 0.05A

Connect up to 40 sets

Green wire only

<b>Item Number</b>	<b>PER SET</b>
<b>LED-M5*</b>	<b>\$17.99</b>

\*Specify Color when ordering:

A-Amber, B-Blue, CW-Cool White, G-Green, M-Multi Color, P-Purple, R-Red, WW-Warm White, Y-Yellow



### WIDE ANGLE M5 SETS

COMMERCIAL GRADE, UL LISTED

120 Volt AC

LED Count: 70 with 4" spacing

Length: 24'

Power Consumption: 4.8W, 0.04A

Connect up to 43 sets

Green wire only

<b>Item Number</b>	<b>PER SET</b>
<b>LED-M5WA*</b>	<b>\$17.99</b>

\*Specify Color when ordering:

A-Amber, B-Blue, CW-Cool White, G-Green, M-Multi Color, P-Purple, R-Red, WW-Warm White, Y-Yellow



### C6 STRAWBERRY SETS

COMMERCIAL GRADE, UL LISTED

120 Volt AC

LED Count: 70 with 4" spacing

Length: 24'

Power Consumption: 4.8W, 0.04A

Connect up to 40 sets

Green wire only

<b>Item Number</b>	<b>PER SET</b>
<b>LED-STRAW*</b>	<b>\$17.99</b>

\*Specify Color when ordering:

B-Blue, CW-Cool White, G-Green, M-Multi Color, R-Red, WW-Warm White



### G12 RASPBERRY SETS

COMMERCIAL GRADE, UL LISTED

120 Volt AC

LED Count: 70 with 4" spacing

Length: 22.5'

Power Consumption: 4.4W, 0.08A

Connect up to 40 sets

Green wire only

<b>Item Number</b>	<b>PER SET</b>
<b>LED-RASP*</b>	<b>\$17.99</b>

\*Specify Color when ordering:

B-Blue, CW-Cool White, G-Green, M-Multi Color, R-Red, WW-Warm White



# CUSTOM STRING LIGHTS & BULBS PARTY & SEASONAL LIGHTS



## C7 500' SPOOLS

SOCKETS AND WIRE WITHOUT BULBS  
SPT1 or SPT2 insulated wire  
Amp Rating: SPT1-7A, SPT2-10A  
Base Size: C7-E12 Candelabra Base  
Socket Spacing: 6", 12", 15" or 18"  
Male and female plugs not included  
Available in Green or White wire

Item Number	TYPE	Each
100SL51C7*	SPT1	\$169.99 - \$219.99
100SL52C7*	SPT2	\$179.99 - \$229.99

\*Specify Color when ordering: G-Green, W-White

## C9 500' SPOOLS

SOCKETS AND WIRE WITHOUT BULBS  
SPT1 or SPT2 insulated wire  
Amp Rating: SPT1-7A, SPT2-10A  
Base Size: C9-E17 Intermediate Base  
Socket Spacing: 6", 12", 15" or 18"  
Male and female plugs not included  
Available in Green or White wire

Item Number	TYPE	Each
100SL51C9*	SPT1	\$169.99 - \$219.99
100SL52C9*	SPT2	\$179.99 - \$229.99

\*Specify Color when ordering: G-Green, W-White



## BULK WIRE

500' Spool  
Use to make custom string light sets.  
SPT1 or SPT2, green or white wire.

Item Number	TYPE	Each
100SLAWIR1*	SPT1	\$99.99
100SLAWIR2*	SPT2	\$119.99

\*Specify Color when ordering: G-Green, W-White



## MALE & FEMALE ZIP WIRE PLUGS

SPT1 or SPT2 (12/PACKAGE)  
Use to with bulk wire (100SLAWIR) to make  
custom string light sets. White or Green.

Item Number	Each
100SPT1PLUG*-(M/F)	\$12.99
100SPT2PLUG*-(M/F)	\$12.99

\*Specify Color when ordering: G-Green, W-White



## C7 & C9 SOCKETS

SPT1 or SPT2 (100/PACKAGE)  
Use to with bulk wire (100SLAWIR) to make  
custom string light sets. White or Green.

Item Number	Each
100SLAC(7/9)SKT1*-(M/F)	\$12.99
100SLAC(7/9)SKT2*-(M/F)	\$12.99

\*Specify Color when ordering: G-Green, W-White

## LED G20 BULB

E-12 BASE, FACETED OR SMOOTH FR  
LED Count: 3  
Base: E12 Candelabra  
Lumen Output: 7.5 lm  
Power Consumption: 0.4W, 0.013A  
Lifetime: 50,000 Hours  
Nickel plated base, high-impact plastic bulb  
Smooth frosted or clear faceted finish  
25/box - boxes contain 1 color



Item Number 227LEDG20F\* PER BOX \$39.99



Item Number 227LEDG20\* PER BOX \$39.99

## LED G30 BULB

E-17 BASE  
LED Count: 5  
Base: E17 Intermediate  
Lumen Output: 12.5 lm  
Power Consumption: 0.6W, 0.013A  
Lifetime: 50,000 Hours  
Nickel plated base, high-impact plastic bulb  
Smooth frosted or clear faceted finish  
25/box - 10 boxes/case, boxes contain 1 color



Item Number 227LEDG30F\* PER BOX \$44.99



Item Number 227LEDG30\* PER BOX \$44.99

## LED C7 BULB

E-12 BASE  
LED Count: 3  
Base: E12 Candelabra  
Lumen Output: 7.5 lm  
Power Consumption: 1.2W, 0.016A  
Lifetime: 50,000 Hours  
Nickel plated base, high-impact plastic bulb  
Smooth frosted or clear faceted finish  
25/box - boxes contain 1 color



Item Number 100C7LED\* PER BOX \$39.99



Item Number 100C7LED\* PER BOX \$32.99

## LED C9 BULB

E-17 BASE  
LED Count: 5  
Base: E17 Intermediate  
Lumen Output: 12.5 lm  
Power Consumption: 1.2W, 0.01A  
Lifetime: 50,000 Hours  
Nickel plated base, high-impact plastic bulb  
Smooth frosted or clear faceted finish  
25/box - boxes contain 1 color



Item Number 100C9LED\* PER BOX \$49.99



Item Number 100C9LED\* PER BOX \$39.99

Multiple colors and styles available - call or visit **BirdDog Distributing** for more info!

## C7 BULB (5 - 7 Watt)

E-12 BASE  
Base: E12 Candelabra  
Power Consumption: 5.0W or 7.0W  
Lifetime: 3,000 Hours  
Double Dipped Color Lock Process  
Nickel base, glass bulb  
25/box - boxes contain 1 color



Item Number	COLOR	PER BOX
1005C7*	*SPECIFY	\$6.49-\$6.99

## C9 BULB

E-17 BASE  
Base: E17 Intermediate  
Power Consumption: 7.0W  
Lifetime: 3,000 Hours  
Double Dipped Color Lock Process  
Nickel base, glass bulb  
25/box - boxes contain 1 color

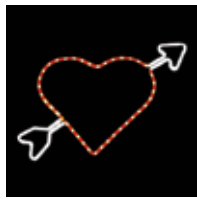


Item Number	COLOR	PER BOX
1007C9*	*SPECIFY	\$7.49-\$7.99

# PARTY & SEASONAL LIGHTS SEASONAL MOTIFS



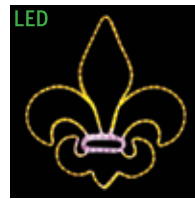
**DOUBLE HEARTS**  
INDOOR/OUTDOOR  
Dimensions: 23.0" W x 18.0" H  
Power Consumption: 29.0W, 0.25A  
Hanging ring included  
**Item Number Each**  
**103MO807 \$35.99**



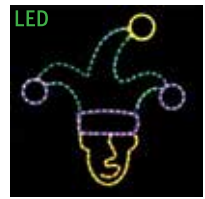
**HEART & CUPID'S ARROW**  
INDOOR/OUTDOOR  
Dimensions: 24.0" W x 15.0" H  
Power Consumption: 34.0W, 0.29A  
Hanging ring included  
**Item Number Each**  
**103MO806 \$34.99**



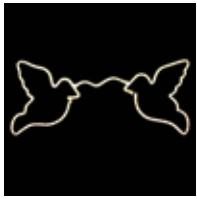
**LED CUPID WITH BOW**  
INDOOR/OUTDOOR  
Dimensions: 36.0" W x 36.0" H  
Power Consumption: 19.0W, 0.17A  
Hanging ring included  
**Item Number Each**  
**103MOLCUPID \$119.99**



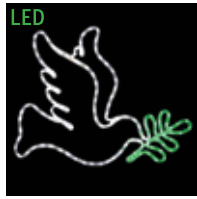
**LED FLUR DE LIS**  
YELLOW & PURPLE  
Dimensions: 24.5" W x 25.0" H  
Power Consumption: 13.5W/1.2A  
Hanging ring included  
**Item Number Each**  
**SILL-MOLFDL \$69.99**



**LED COURT JESTER**  
GREEN, PURPLE & YELLOW  
Dimensions: 24.0" W x 26.0" H  
Power Consumption: 8.5W, 0.1A  
Hanging ring included  
**Item Number Each**  
**SILL-MOLJESTER \$84.99**



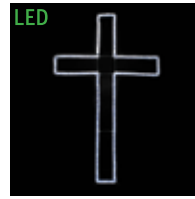
**WHITE DOVES**  
WARM WHITE INCANDESCENT  
Dimensions: 24.0" W x 11.0" H  
Power Consumption: 60.0W, 0.5A  
Hanging ring included  
**Item Number Each**  
**102MO951 \$29.99**



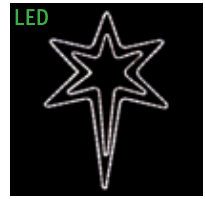
**LED DOVE**  
DOVE WITH 5 LEAF OLIVE BRANCH  
Dimensions: 21.0" W x 17.0" H  
Power Consumption: 7.7W/0.08A  
Hanging ring included  
**Item Number Each**  
**SILL-D4553CWG \$39.99**



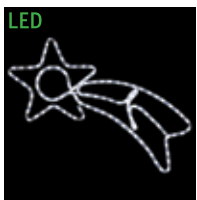
**LED SMALL CROSS**  
2' COOL WHITE CROSS  
Dimensions: 2'-15.0" W x 24.0" H  
Power Consumption: 2'-5.0W/0.14A  
Hanging ring included  
**Item Number Each**  
**SILL-MOLCROSS-2 \$39.99**



**LED LARGE CROSS**  
6' COOL WHITE CROSS  
Dimensions: 6'-45.0" W x 72.0" H  
Power Consumption: 6'-28.0W/0.25A  
Hanging ring included  
**Item Number Each**  
**SILL-MOLCROSS-6 \$139.99**



**LED BETHLEHEM STAR**  
COOL WHITE STAR  
Dimensions: 24.0" W x 34.0" H  
Power Consumption: 10.0W/0.1A  
Hanging ring included  
**Item Number Each**  
**100MOLT901 \$79.99**



**LED SHOOTING STAR**  
WHITE STAR  
Dimensions: 26.0" W x 12.0" H  
Power Consumption: 5.0W/0.06A  
Hanging ring included  
**Item Number Each**  
**100MOLTSTAR \$64.99**



**LED DOUBLE STAR**  
WARM WHITE MOTIF  
Dimensions: 22.0" W x 22.0" H  
Power Consumption: 6.7W/0.07A  
Premium UV protected rope light  
**Item Number Each**  
**SILL-MOLSTAR2 \$59.99**



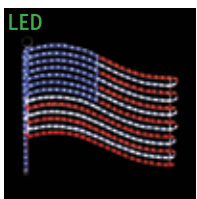
**LED BLUE & WHITE STAR**  
BLUE AND COOL WHITE MOTIF  
Dimensions: 33.0" W x 32.0" H  
Premium UV resistant rope light  
Hanging rings included  
**Item Number Each**  
**SILL-MOL37 \$99.99**



**3-D BUTTERFLY**  
GREEN & PINK, ALTERNATING OR ALL-ON  
Dimensions: 16.0" W x 13.0" H x 5.5" D  
Power Consumption: 71.0W, 0.6A  
Double hanging ring included  
**Item Number Each**  
**100MODNM1406-GP \$59.99**



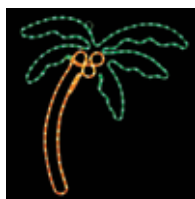
**EASTER BUNNY & EGGS**  
MULTI COLORED MOTIF  
Dimensions: 25.0" W x 36.0" H  
Power Consumption: 14.0W/0.13A  
Hanging ring included  
**Item Number Each**  
**SILL-MOLBUNNY \$99.99**



**USA FLAG**  
LED MOTIF  
Dimensions: 24.0" H x 24.0" H  
Premium UV protected ropelight  
Hanging ring included  
**Item Number Each**  
**SILL-MOLFLAG \$99.99**



**LUCKY SHAMROCK**  
LED MOTIF  
Dimensions: 24.0" W x 24.0" H  
Power Consumption: 6.3W/0.07A  
Hanging ring included  
**Item Number Each**  
**SILL-MOLSHAM \$59.99**



**PALM TREES**  
25" OR 34" TALL LED PALM TREE  
Dimensions: 19.0" W x 25.0" H, 23.0" W x 34.0" H  
Premium UV protected ropelight  
Hanging ring included  
**Item Number Each**  
**SILL-MOLPALM (25") \$79.99**  
**SILL-MOLPALM-1 (34") \$109.99**

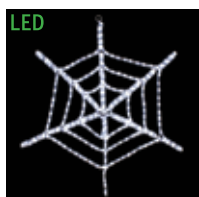


**PINK FLAMINGO**  
INDOOR/OUTDOOR  
Dimensions: 19.5" W x 37.0" H  
Power Consumption: 50.0W, 0.43A  
Stand and Hanging ring included  
**Item Number Each**  
**SILL-MO3718 \$49.99**



**LED LAMP POST & CANDLE**  
WHITE OR BLACK LAMP POST  
Dimensions: 13.5" W x 53.0" H  
Power Consumption: 3.8W/0.06A  
Indoor/Outdoor use  
**Item Number Each**  
**100MOLPOST-(B/W) \$79.99**

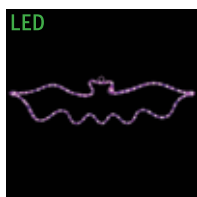
# HALLOWEEN LIGHTS PARTY & SEASONAL LIGHTS



## LED SPIDER WEB

COOL WHITE MOTIF  
Dimensions: 29.0" W x 29.0" H  
Power Consumption: 18.0W, 0.16A  
Hanging ring included

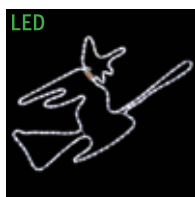
Item Number Each  
SILL-MOWEB \$54.99



## LED BAT

PURPLE MOTIF  
Dimensions: 23.0" W x 8.0" H  
Power Consumption: 4.5W, 0.05A  
Hanging ring included

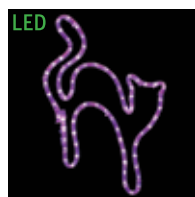
Item Number Each  
SILL-MOBAT \$29.99



## LED HALLOWEEN WITCH

COOL WHITE MOTIF  
Dimensions: 34.0" W x 18.0" H  
Power Consumption: 10.0W, 1.0A  
Hanging ring included

Item Number Each  
SILL-MOWITCH \$44.99



## LED CAT

PURPLE MOTIF  
Dimensions: 13.0" W x 19.0" H  
Power Consumption: 4.5W, 0.05A  
Hanging ring included

Item Number Each  
SILL-MOCAT \$29.99



## HALLOWEEN WITCH

MULTI COLORED MOTIF  
Dimensions: 32.0" W x 32.0" H  
Power Consumption: 62.0W, 0.5A  
Hanging ring included

Item Number Each  
102MOWITCH \$79.99



## 4' GHOST INFLATABLE

120V INDOOR/OUTDOOR DISPLAY  
Includes adaptor, fan and bulbs  
Tie down kit included  
LED Lights inside

Item Number Each  
INFL-HL800 \$39.99



## 4' MONSTER PUMPKIN HEAD INFLATABLE

120V INDOOR/OUTDOOR DISPLAY  
Includes adaptor, fan and bulbs  
Tie down kit included  
LED Lights inside

Item Number Each  
INFL-HL801 \$39.99



## 6.5' HEADLESS HORSEMAN INFLATABLE

120V INDOOR/OUTDOOR DISPLAY  
Includes adaptor, fan and bulbs  
Tie down kit included  
LED Lights inside

Item Number Each  
INFL-HL802 \$149.99



## 8' SCARY PUMPKIN MONSTER INFLATABLE

120V INDOOR/OUTDOOR DISPLAY  
Includes adaptor, fan and bulbs  
Tie down kit included  
LED Lights inside

Item Number Each  
INFL-HL803 \$79.99



## HALLOWEEN PUMPKIN FAMILY INFLATABLE

120V 7' 8" W x 3' H, INDOOR/OUTDOOR DISPLAY  
Includes adaptor, fan and bulbs  
Tie down kit included  
LED Lights inside

Item Number Each  
INFL-HL805 \$59.99



## LED HALLOWEEN PUMPKIN LIGHTS

BATTERY POWERED, ON/OFF/TIMER SWITCH  
20 Pumpkins with super bright LEDs inside  
6' 6" Overall length with 12" leads. Pumpkins spaced 4" apart  
Requires 3 "AA" Batteries (not included)

Item Number Each  
SLIM5-BPUM \$14.99



## FLICKER FLAME BULBS

INDOOR/OUTDOOR  
Amber or Purple flicker flame bulbs  
C7/E12 Base bulb, 2 bulbs per pack  
120 Volt, 3 Watts per bulb  
300 Hour Lifetime

Item Number Each  
SLBC71-FF\* \$2.99

\*Specify Color when ordering: A-Amber, P-Purple



## FLICKER FLAME STRING LIGHTS

120V INDOOR/OUTDOOR  
Amber or Purple flicker flame bulbs  
10 Bulbs/Sockets spaced 12" apart  
C7 Black SPT1 wire and sockets  
11 watts, 0.1 amps, end-to-end plugs

Item Number Each  
SLIC7-FF\* \$19.99

\*Specify Color when ordering: A-Amber, P-Purple



## HALLOWEEN MINI LIGHT SET

120V INDOOR/OUTDOOR  
100 Purple and orange bulbs with black wire  
50 ft total length, 6" bulb spacing  
120 Volt, 42 Watts, 0.4 Amps  
End-to-end plugs/connect up to 3 sets

Item Number Each  
SLIM5-100PO \$17.99

### **The Benefits of using Commercial LED Lighting**

Highly energy efficient LED lighting is increasingly becoming a very popular, low-risk investment for commercial lighting consumers in search of energy and maintenance savings. Research estimates that by the end of 2025, over \$125 Billion worth of LED lights will be sold across the globe, with commercial projects accounting for nearly half of global revenues.

The reason is simple, LED lighting makes for much brighter and energy efficient lighting. An initial investment can pay for itself - in just energy savings alone - in less than a year. Beyond cost savings, several utility industry studies also reinforce the idea that improved visibility provided by LED lighting can enhance pedestrian and motorist safety by lowering instances of certain crimes and reducing accidents along motorways. Many major US cities have commissioned independent, third party studies that have all reached the same conclusion – **commercial LED lighting meets or exceeds existing lighting technologies in terms of the amount and quality of light while simultaneously consuming much less energy.**

### **Reduced Energy Consumption**

With an LED street lighting system the wattage needed per LED light is drastically less than the wattage needed per HPS light today, or other types of lighting e.g., Low Pressure Sodium, Metal Halide, Mercury Vapor. LED lighting delivers more effective illumination, in that the light emitted is focused only on the area requiring illumination, much more so than other lighting sources. As a result, much less light output and energy are wasted to backlight, up-light or glare. Reduced wattage over time means reduced energy consumption, a lower carbon footprint, and lower costs.

### **Improved Visibility & Accurate Color Representation**

When you move from a brightly lit area to a dark area it takes several seconds for your eyes to adjust. This adjustment time can lead to safety issues whether it's walking to a carpark or while in control of a vehicle at highway speed. Color accuracy is also an important consideration when determining what something is or trying to distinguish between colors of similar value. And yet the HPS lighting commonly used today creates these very issues. The poor uniformity of HPS lighting, where the difference in brightness between the brightest and dimmest spots is high, causes the human eye to continually and dangerously adjust, with each adjustment taking seconds. Combined with very poor color representation - sunlight provides a color rendering index (CRI) of 100, HPS lights provide a CRI of about 25 - HPS lighting is now inadequate to provide effective illumination in places where it is needed most. An optimal lighting layout with LED lights positioned for better uniformity – where the difference between the brightest and dimmest spots is low – dramatically improves safety twofold by allowing people to identify hazards from a distance as well as eliminating the time it takes the eye to adjust. The CRI value of LED lights is typically at least 80, much closer to natural daylight, making it much easier to identify potential hazards and accurately determine specific colors.

### **Adaptability**

Huge strides have been made in lighting control technology allowing LED lighting system owners to modify light output in response to specific situations. In other words, it helps deliver just the right amount of light when and where it's needed most. This adaptive lighting control not only reduces energy consumption further, through the use of dimming, but also prevents over-lighting, reduces glare and minimizes light pollution.

**For more info & specs on our available LED commercial lights see pgs. 25-26 or visit [BirddogDistributing.com](http://BirddogDistributing.com)**

High Pressure Sodium



LED



High Pressure Sodium



LED

