

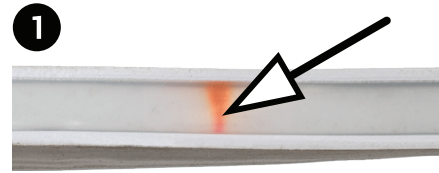


120V SMD LED NEON STRIP LIGHT INSTRUCTIONS

CUTTING INTERVALS:

The length of your 120V SMD LED Neon strip light is customizable and may be cut to size in specific intervals only. Can't find the mark? For more info on cutting intervals please contact your supplier.

- 1 Using the cutting interval length, measure from the power cord connection or the end of your neon strip light you will find a mark on the neon strip light that indicates where to make your cut.



- 2 Use Brilliant Brand rope light cutters or other heavy duty shears to make a perpendicular cut precisely where the cut mark is located.



WARNING: When using strip lighting outdoors, waterproof PVC or silicone is required to seal all connections, power cords, and end caps. NOTE the use of any non-recommended sealant e.g. electrical tape, may result in a strip light or strip light accessory failure and will void the warranty.

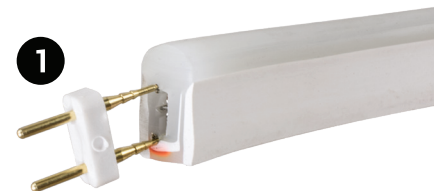


Always insert sharp pins into strip light and rounded pins into accessories.

CONNECTING TO AN ACCESSORY FEMALE END:

- 1 Line up the sharp prongs of the power connector with the SMD Neon strip light wires.
- 2 Gently insert power connector into the end of the Neon strip light.
- 3 Optional: outdoor applications require the use of a weatherproofing kit and sealant to protect all connections.
- 4 Insert rounded prongs of power connector into the accessory.
- 5 Attach an end cap to the end of SMD Neon strip light run (If not previously installed).

NOTE: LED lights are polarized. If they do not light up when you first plug them in, simply unplug the power cord and reinstall connection 180° from the original configuration, or insert the power connector in the opposite end of the rope light.



WARNING: LED lights produce excessive heat operating while spooled. Fully unspool all LED lights before operation. Failure to do so may result in damage to the lighting and or property.